

# Chapter 9

## CHASSIS DRAWINGS

---

1. CAB DRAWINGS
2. CAB BACK DRAWINGS
3. CHASSIS DRAWINGS
4. CHASSIS FRAME DRAWINGS
5. DRILLING HOLES ON THE SIDE RAIL (AROUND REAR SUSPENSION)

### ABOUT CAD-DATA

**CAD-DATA** is contained on separate attachment file in this CD-ROM.

**CONTENTS ;**

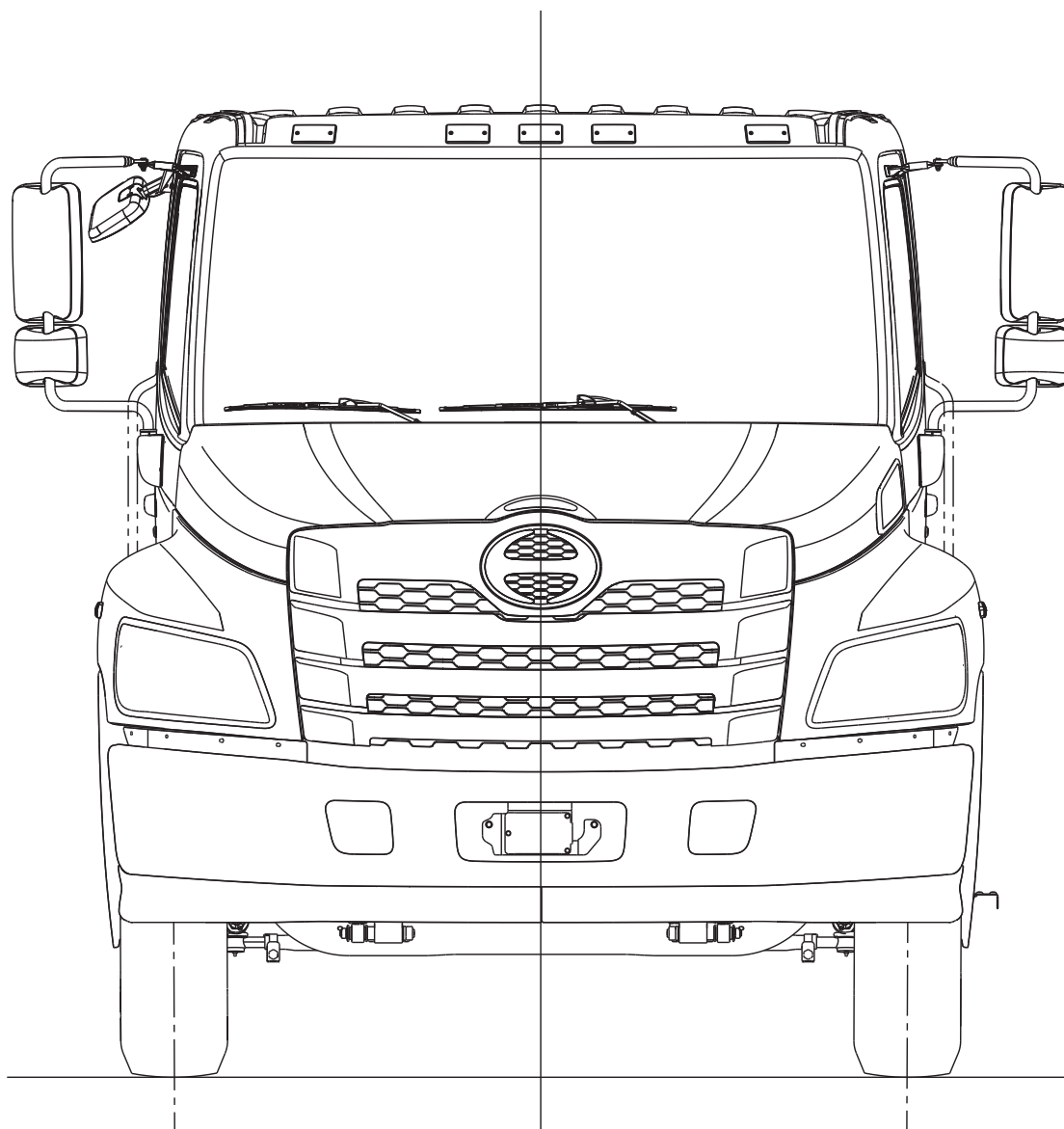
- CAB DRAWING
- CAB BACK DRAWING
- CHASSIS DRAWING

## 1. CAB DRAWINGS

---

### MODEL : NEC1 AND NFC1

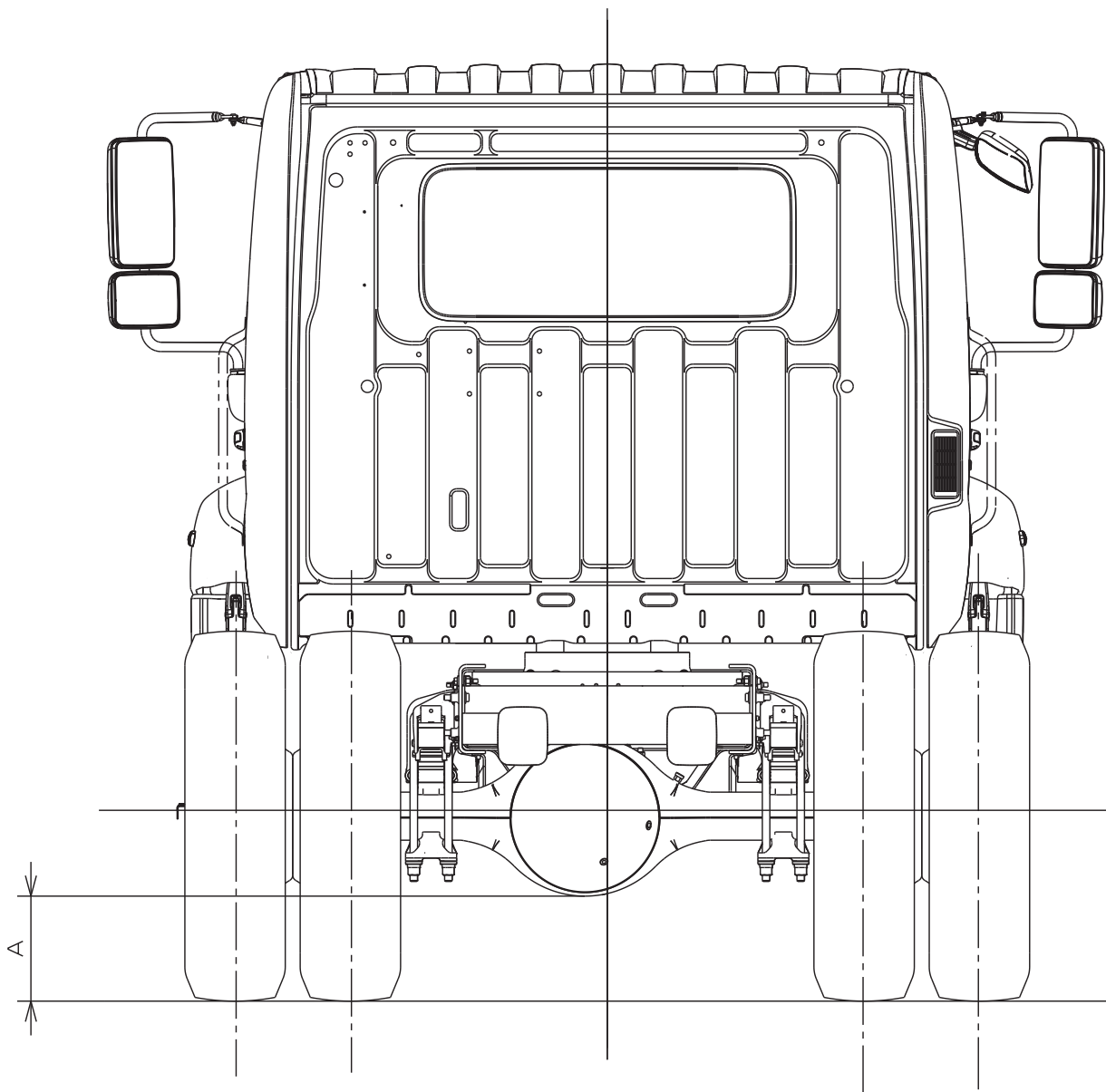
- FRONT SIDE VIEW



## • REAR SIDE VIEW

Unit : mm (in.)

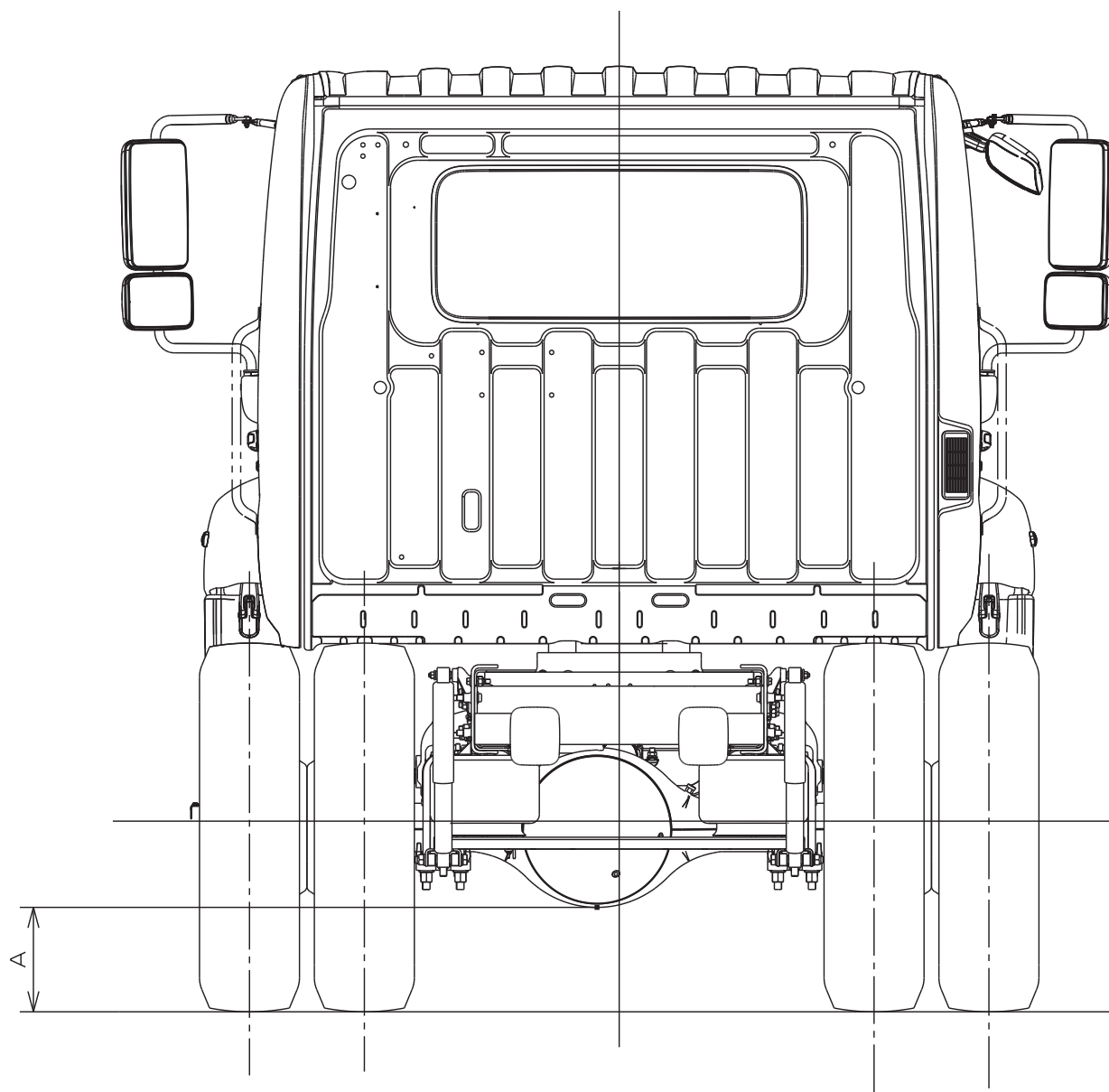
MODEL	TIRE	A
NE	10R22.5	270(10.6)
	245/70R19.5	180(7.1)
	11R22.5	285(11.2)
	255/70R22.5	225(8.9)
	295/75R22.5	265(10.4)
NF	11R22.5	285(11.2)
	295/75R22.5	265(10.4)



• REAR SIDE VIEW  
(REAR AIR SUSPENSION)

Unit : mm (in.)

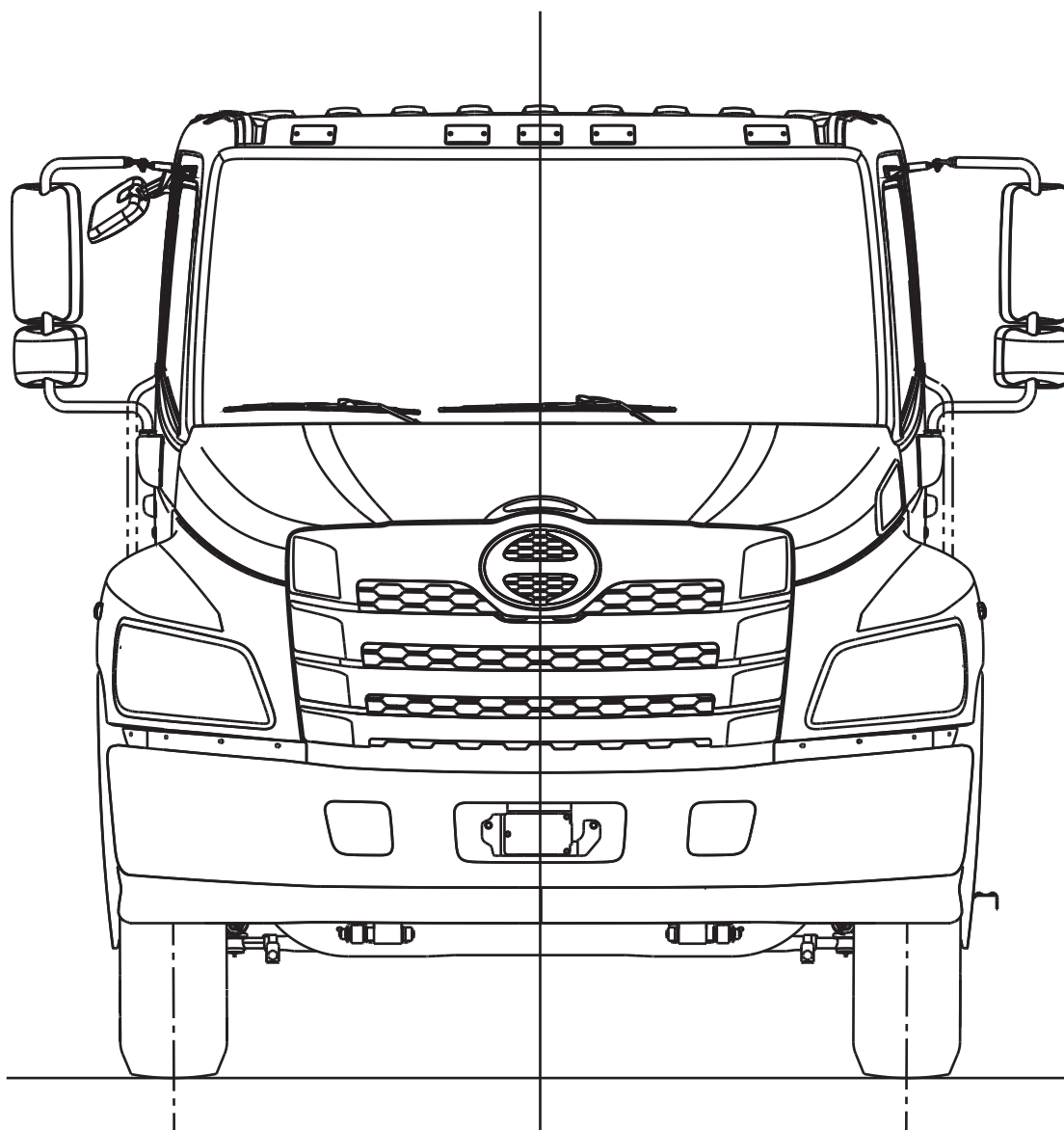
MODEL	TIRE	A
NE	10R22.5	270(10.6)
	245/70R19.5	180(7.1)
	11R22.5	285(11.2)
	255/70R22.5	225(8.9)
	295/75R22.5	265(10.4)
NF	11R22.5	285(11.2)
	295/75R22.5	265(10.4)





**MODEL : NJC1, NVC1 AND NHC1**

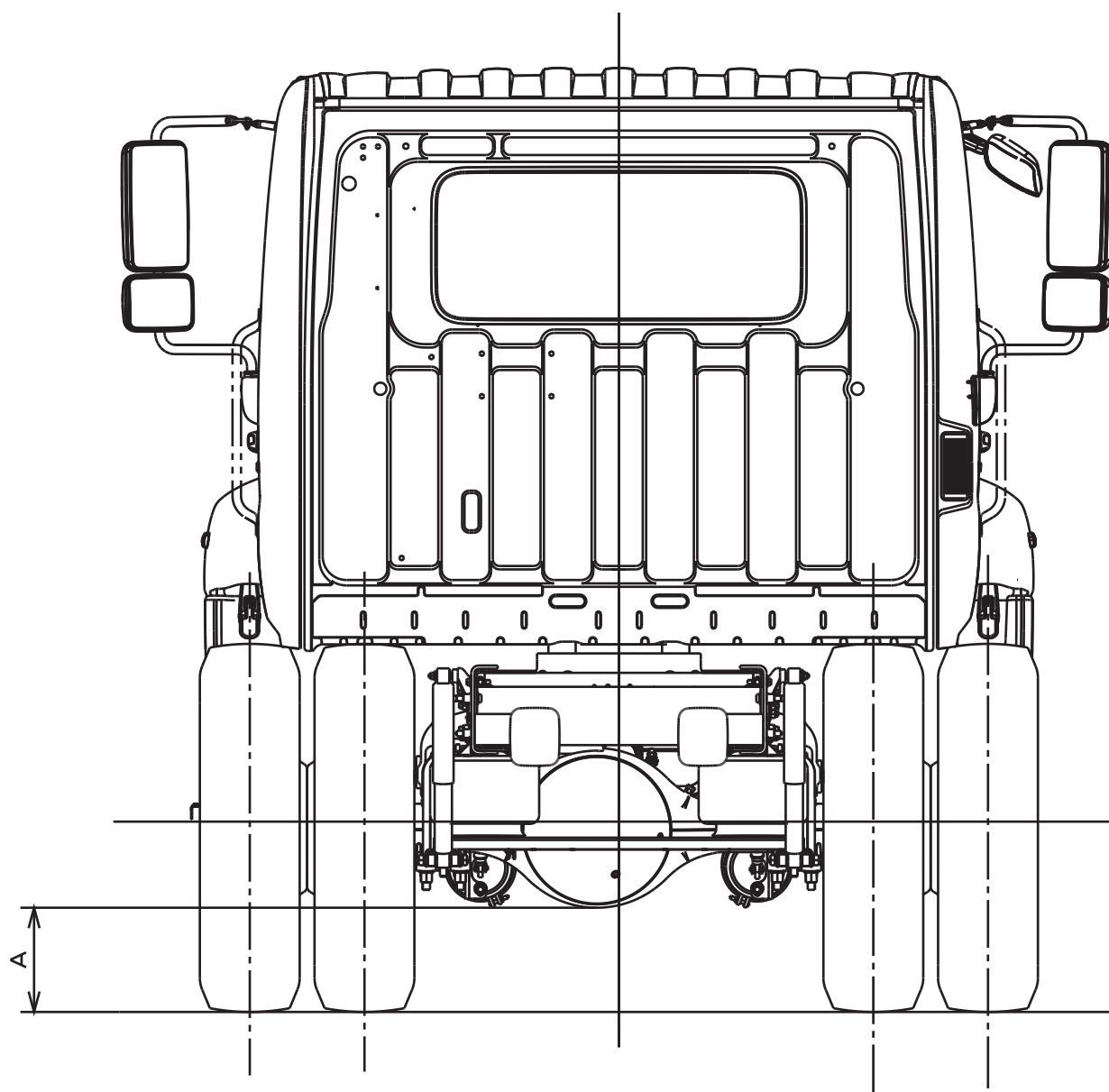
- FRONT SIDE VIEW



• REAR SIDE VIEW  
(REAR AIR SUSPENSION)

Unit : mm (in.)

MODEL	RR AXLE	TIRE	A
NJ	MS-19	11R22.5	285(11.2)
		255/70R22.5	225(8.9)
		295/75R22.5	265(10.4)
NV	MS-21	11R22.5	285(11.2)
		295/75R22.5	265(10.4)
	RS-23 RS-25	11R22.5	255(10.0)
NH	RS-23	11R22.5	255(10.0)
	RS-25	295/75R22.5	235(9.3)

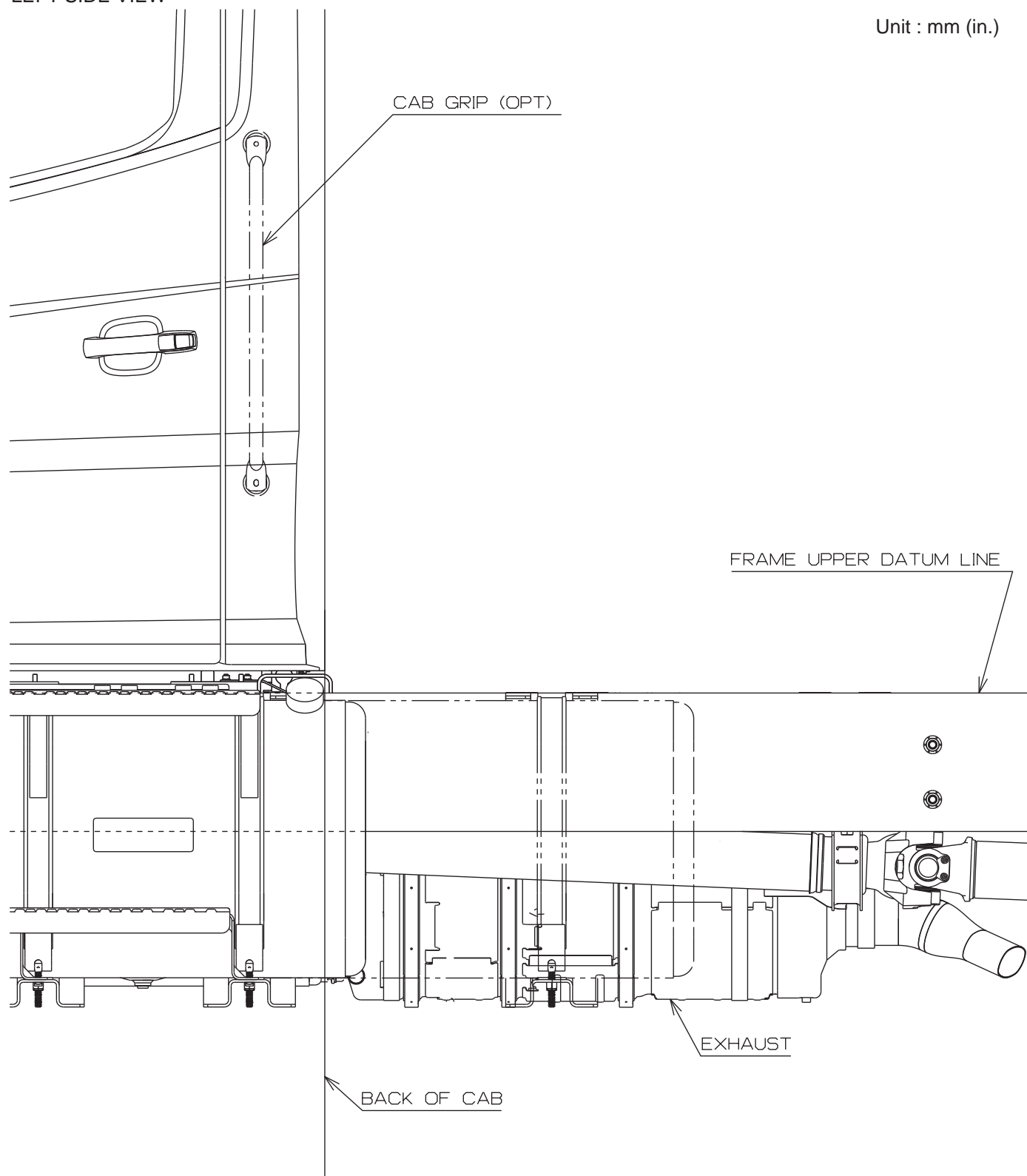


## 2. CAB BACK DRAWINGS

### CHASSIS MODEL : NEC1 AND NFC1 < Day Cab >

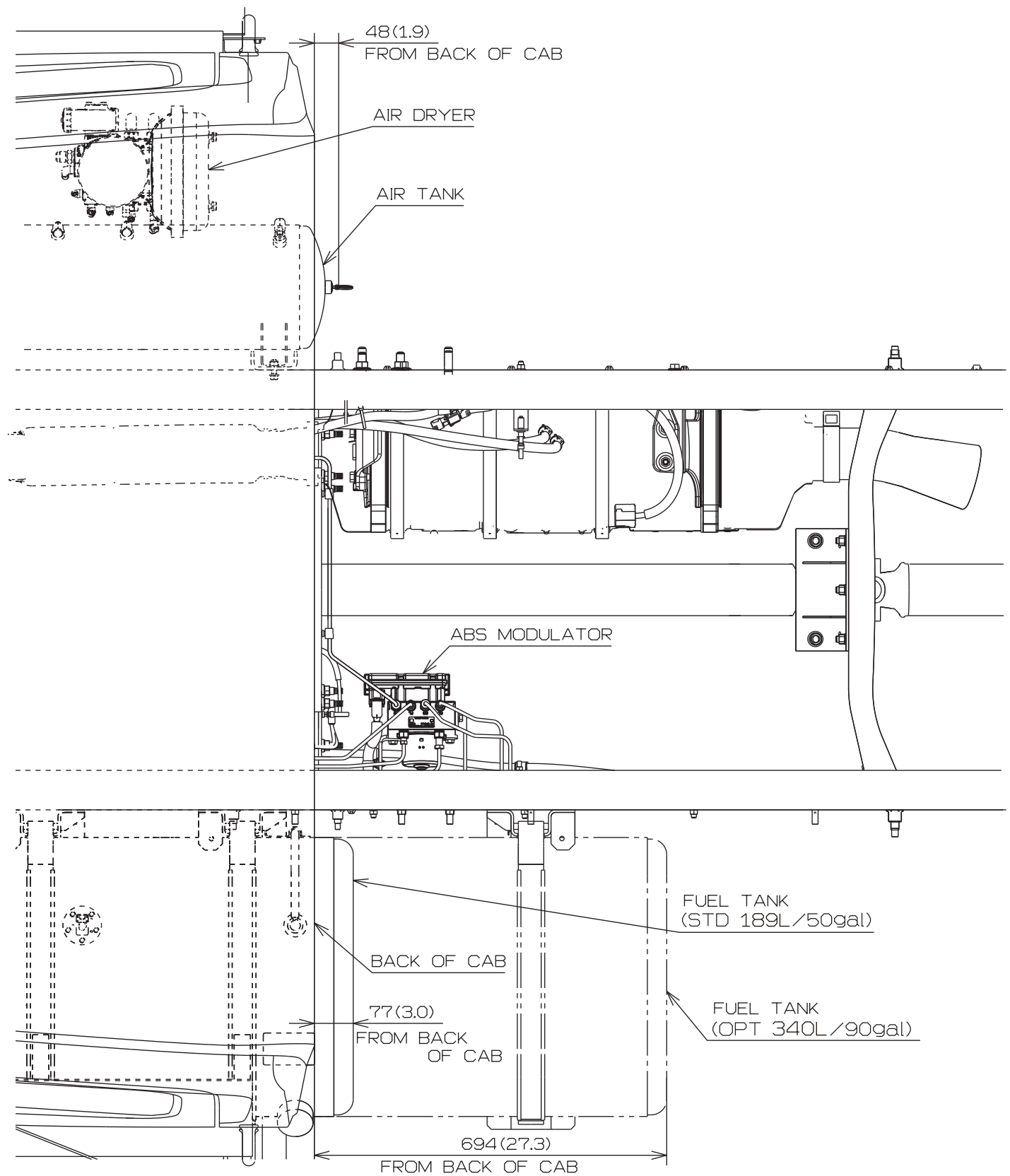
#### • LEFT SIDE VIEW

Unit : mm (in.)



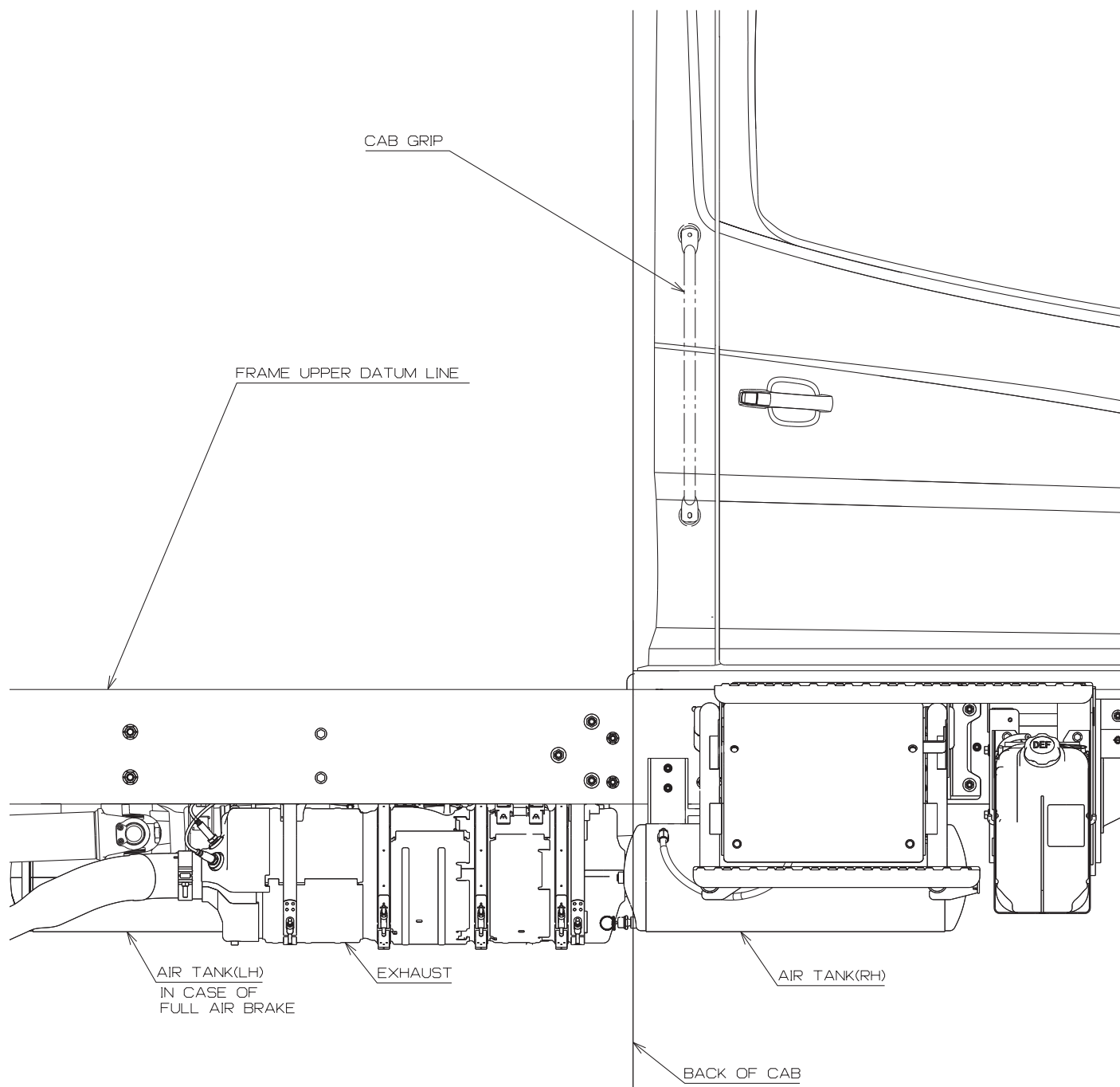
## • UPPER SIDE VIEW

Unit : mm (in.)



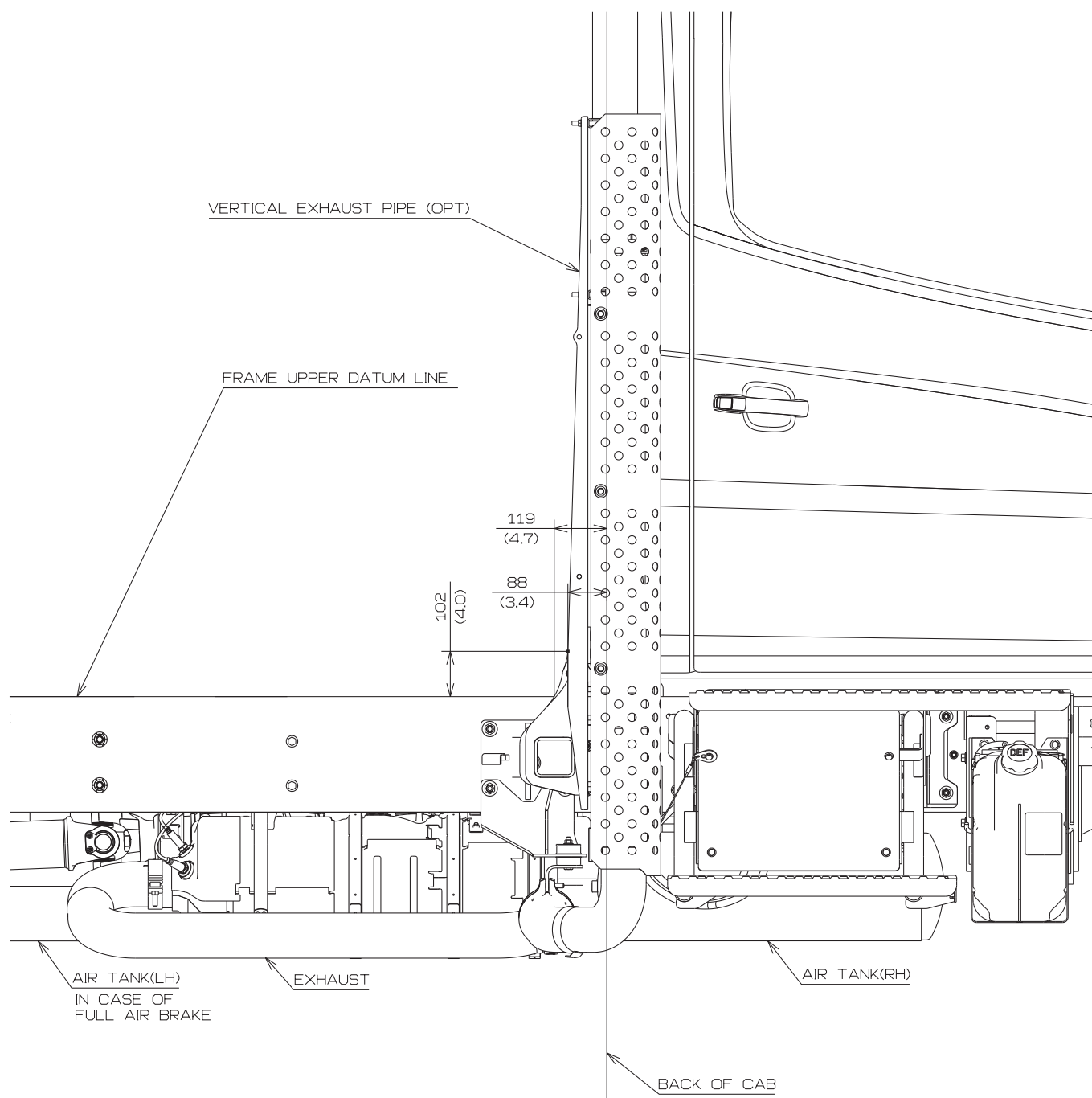
- RIGHT SIDE VIEW  
(SHORT TAIL)

Unit : mm (in.)



- RIGHT SIDE VIEW  
(VERTICAL TAIL)  
< Day Cab ONLY >

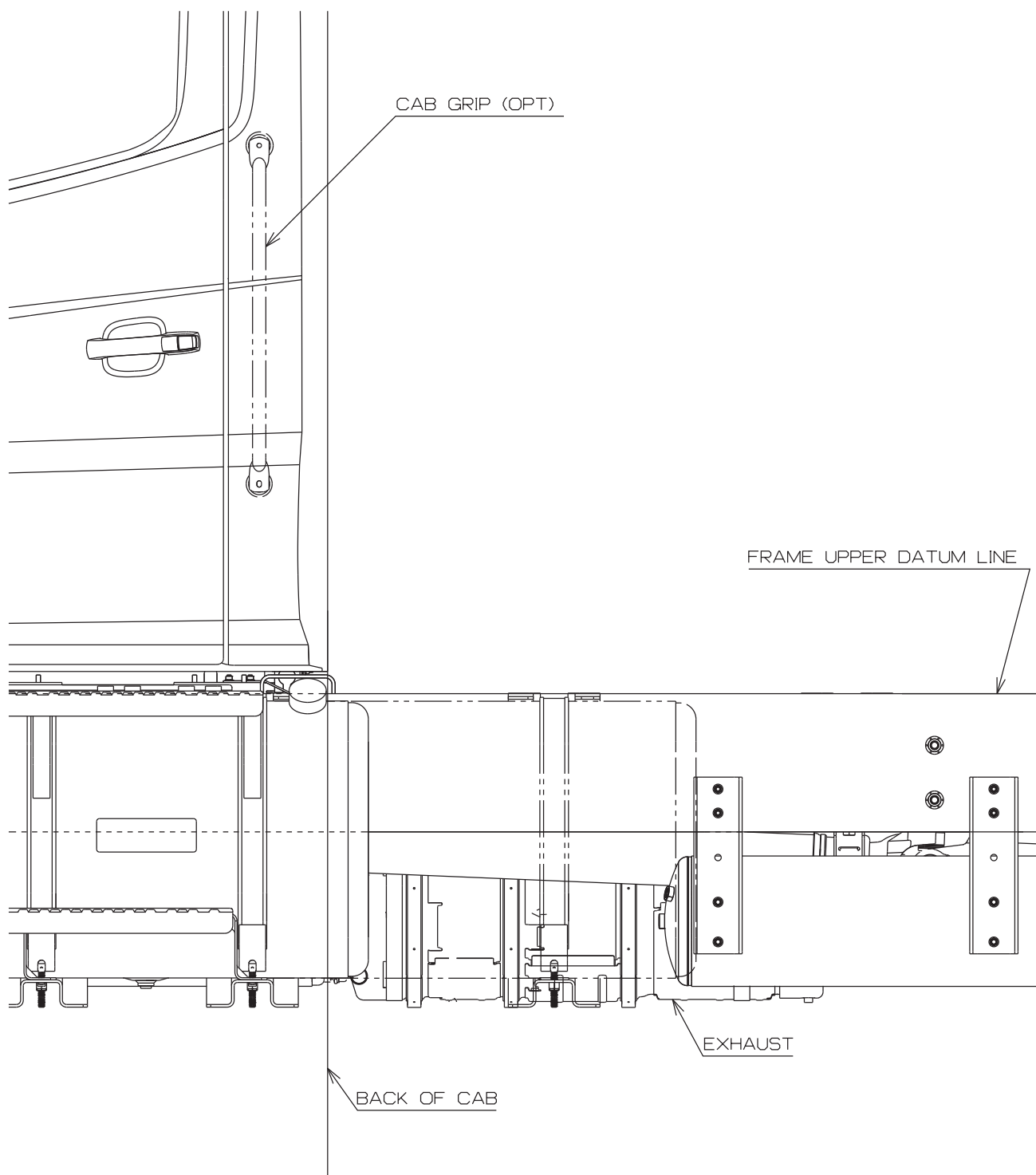
Unit : mm (in.)



**CHASSIS MODEL : NJC1 < Day Cab >  
NVC1 < Day Cab >  
NHC1**

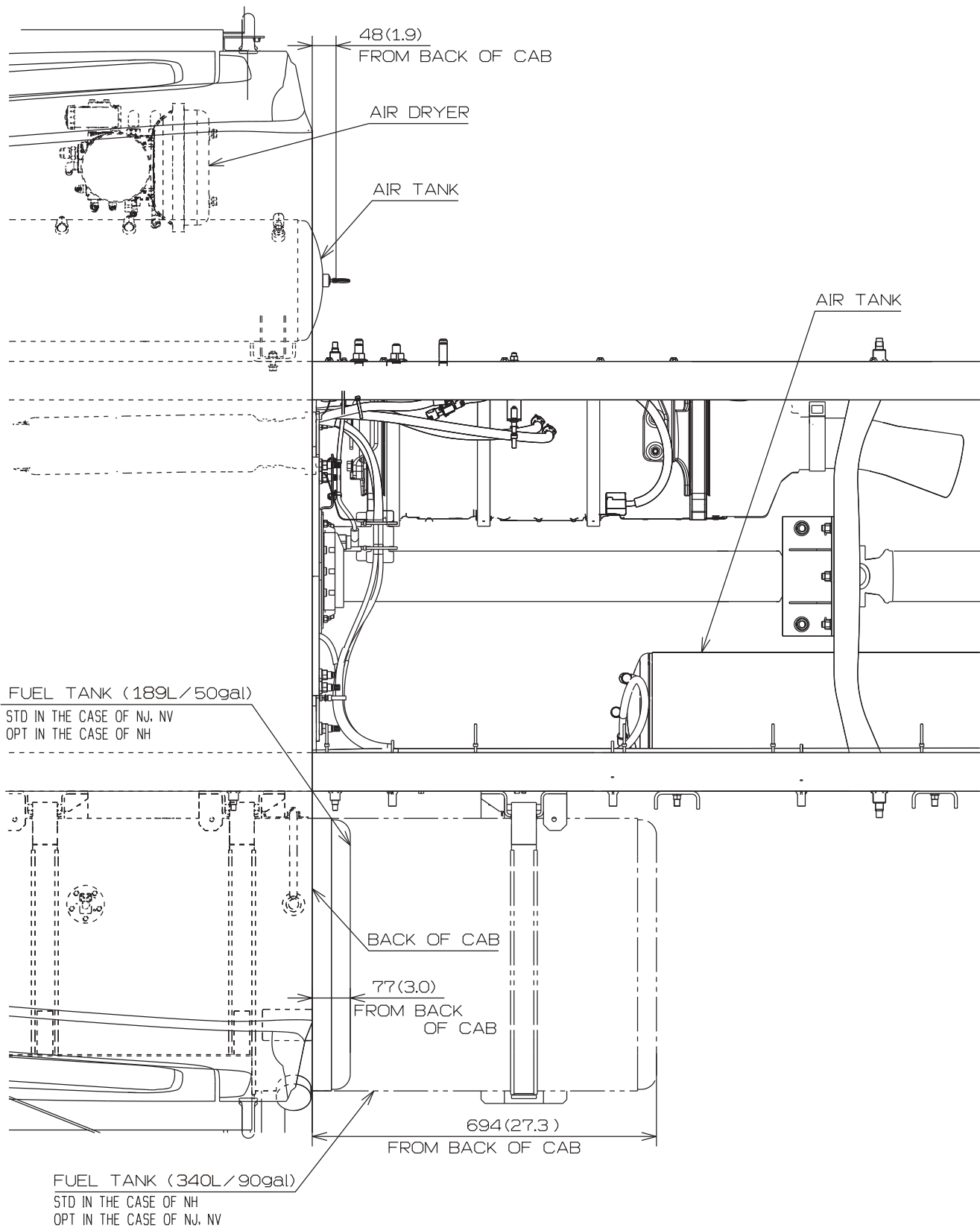
Unit : mm (in.)

• LEFT SIDE VIEW



## • UPPER SIDE VIEW

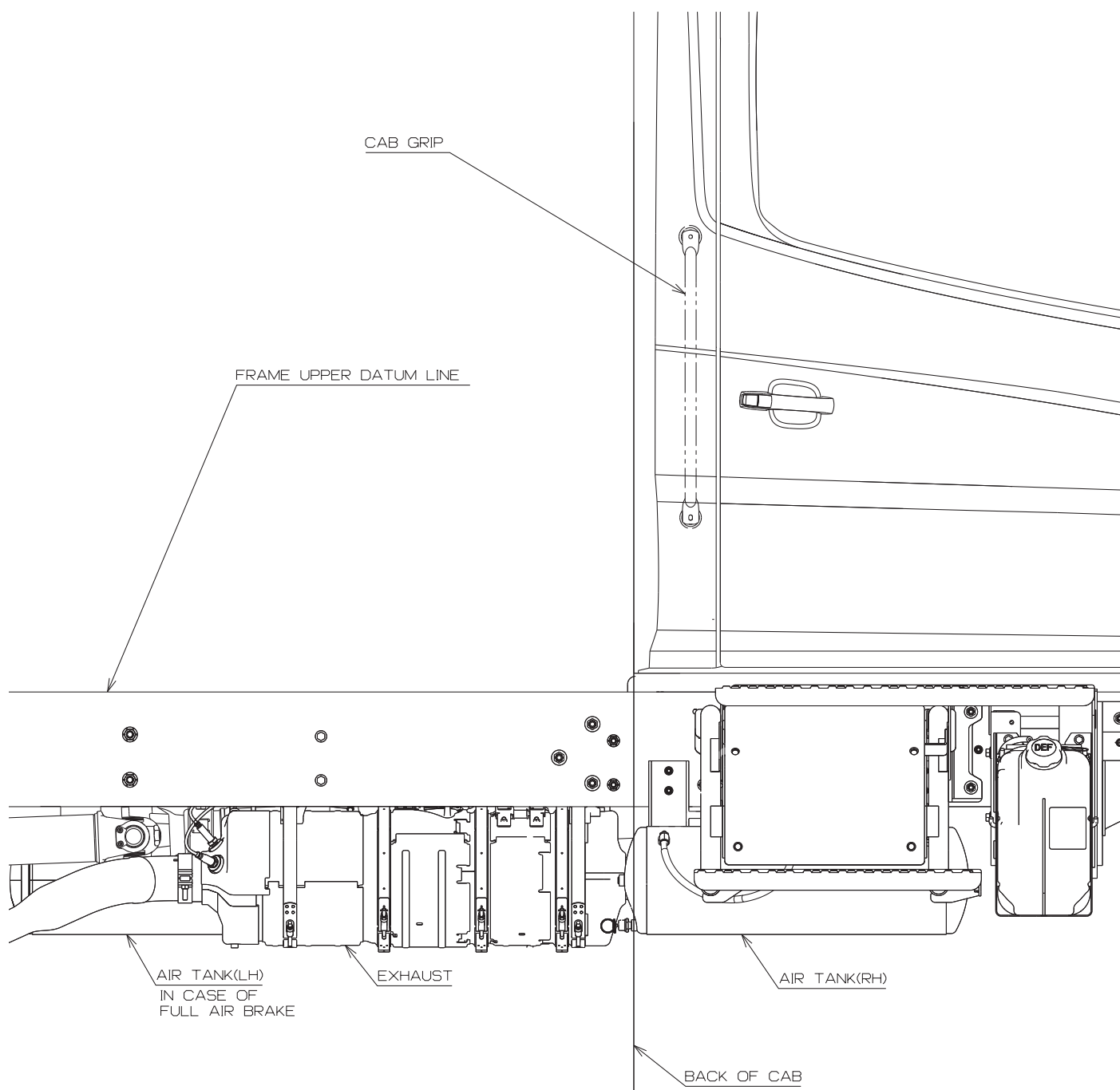
Unit : mm (in.)





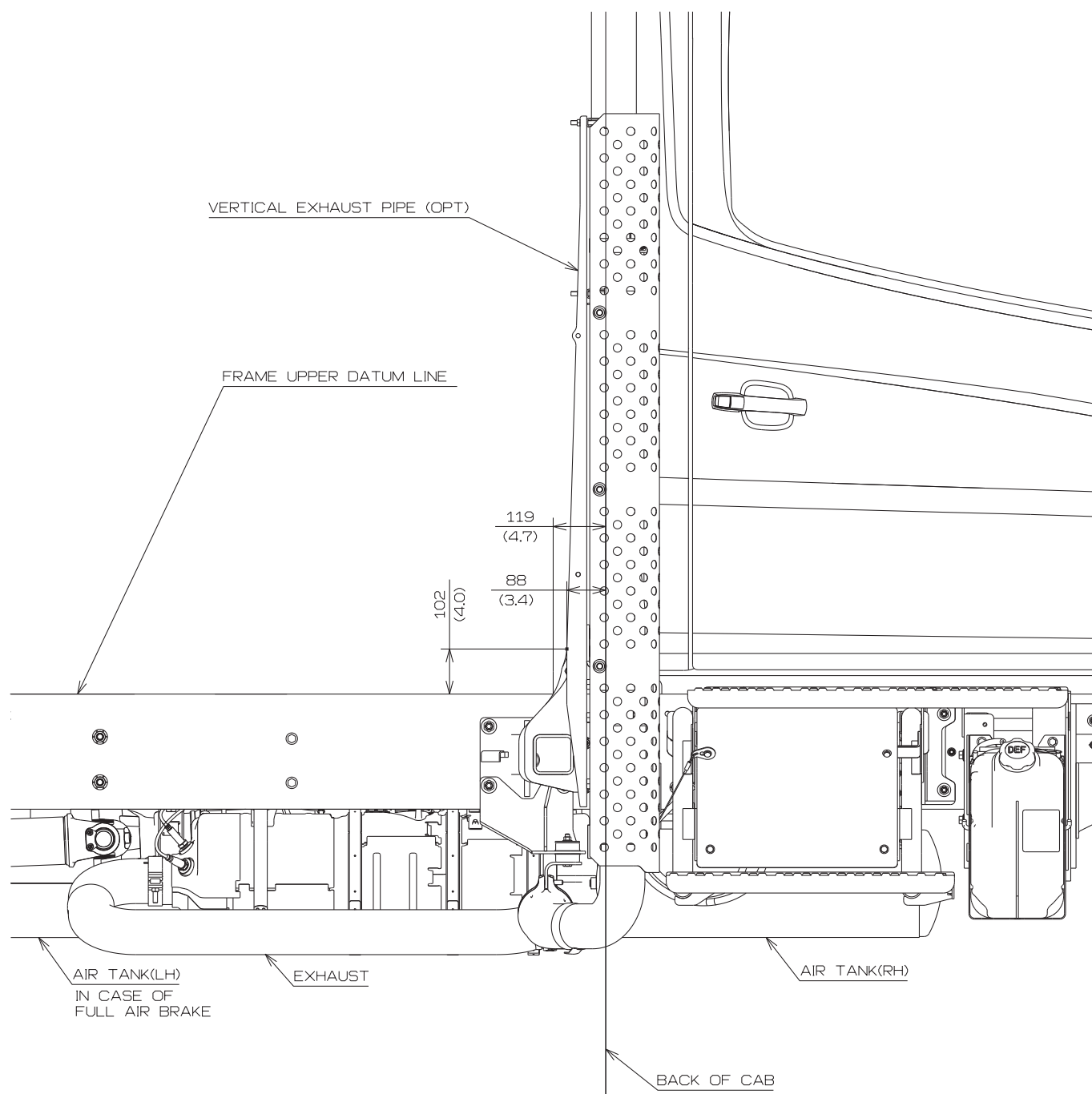
- RIGHT SIDE VIEW  
(SHORT TAIL)

Unit : mm (in.)



- RIGHT SIDE VIEW  
(VERTICAL TAIL)  
< Day Cab ONLY >

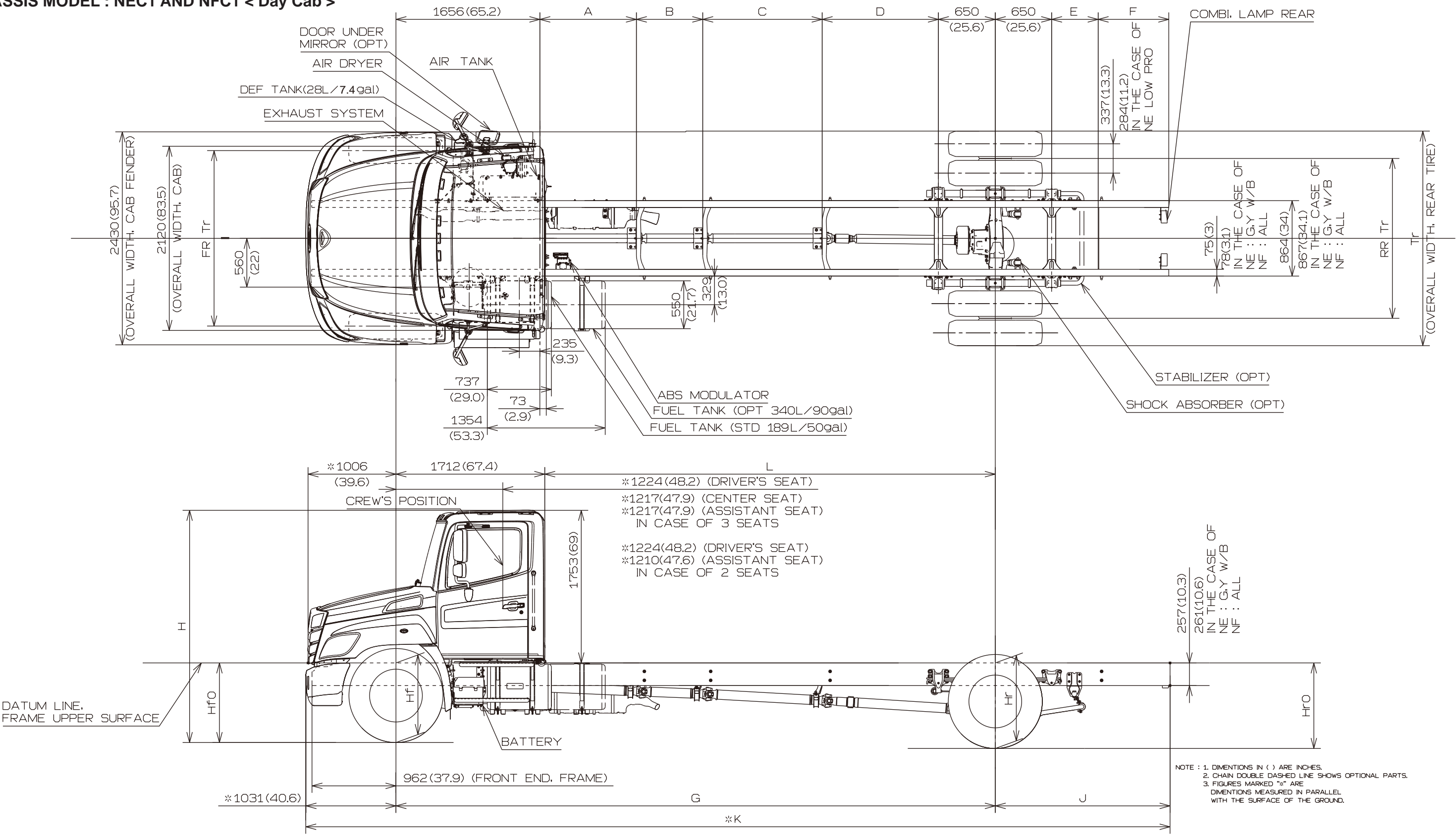
Unit : mm (in.)



3. CHASSIS DRAWINGS

Unit : mm (in.)

CHASSIS MODEL : NEC1 AND NFC1 < Day Cab >



• CHASSIS MODEL : NEC1 AND NFC1 < Day Cab >

DIMENSION OF CHASSIS

Unit : mm (in.)

W/B	A	B	C	D	E	F	G	J *	K *	L
J	804 (31.7)			1335 (52.6)	534 (21.0)	823 (32.4)	4445 (175.0)	2007 (79.0)	7483 (294.6)	2733 (107.6)
L	1109 (43.7)			1335 (52.6)	534 (21.0)	823 (32.4)	4750 (187.0)	2007 (79.0)	7788 (306.6)	3038 (119.6)
M	804 (31.7)	762 (30.0)		1335 (52.6)	534 (21.0)	823 (32.4)	5207 (205.0)	2007 (79.0)	8245 (324.6)	3495 (137.6)
P	804 (31.7)	1067 (42.0)		1335 (52.6)	534 (21.0)	823 (32.4)	5512 (217.0)	2007 (79.0)	8550 (336.6)	3800 (149.6)
R	1109 (43.7)	1219 (48.0)		1335 (52.6)	534 (21.0)	823 (32.4)	5969 (235.0)	2007 (79.0)	9007 (354.6)	4257 (167.6)
T	1109 (43.7)	1676 (66.0)		1335 (52.6)	534 (21.0)	823 (32.4)	6426 (253.0)	2007 (79.0)	9464 (372.6)	4714 (185.6)
V	1109 (43.7)	762 (30.0)	1372 (54.0)	1335 (52.6)	534 (21.0)	823 (32.4)	6883 (271.0)	2007 (79.0)	9921 (390.6)	5171 (203.6)
W	1109 (43.7)	762 (30.0)	1600 (63.0)	1335 (52.6)	534 (21.0)	823 (32.4)	7112 (280.0)	2007 (79.0)	10150 (399.6)	5400 (212.6)

\* In the case of 2464mm (97") ROHF, add 457mm (18") to J and K.

W W/B is NF only.

• CHASSIS MODEL : NEC1 AND NFC1 < Day Cab >

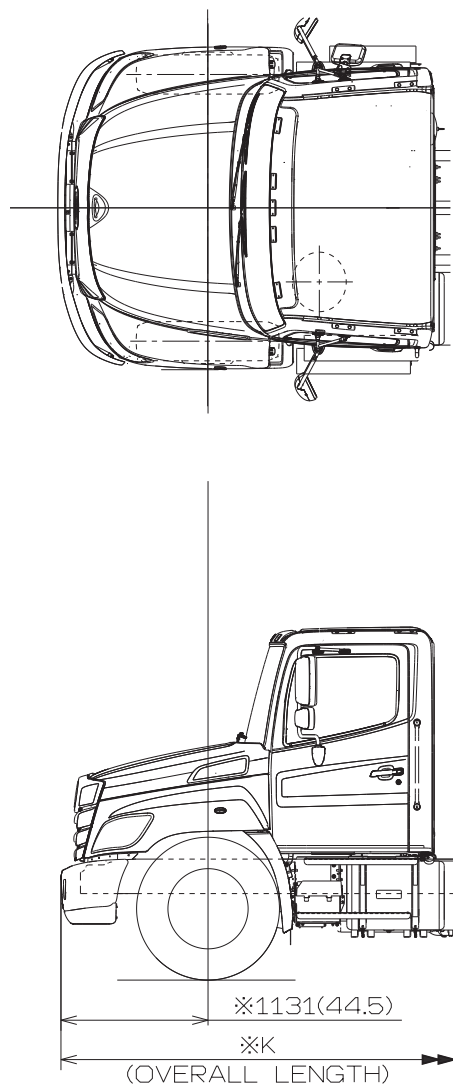
DIMENSION OF HEIGHT FROM GROUND

Unit : mm (in.)

MODEL	FR AXLE	RR AXLE	TIRE	WHEEL	GROUND HEIGHT, FRAME UPPER SURFACE				FR Tr	RR Tr	Tr	H
					Hf0	Hf	Hr	Hr0				
NEC1	10000lbs		11R22.5-14	22.5X8.25-168	925 (36.4)	935 (36.8)	1010 (39.8)	1035 (40.7)	2005 (78.9)	1830 (72.0)	2445 (96.3)	2715 (106.9)
			255/70R22.5-16		865 (34.1)	875 (34.4)	950 (37.4)	975 (38.4)	2005 (78.9)	1830 (72.0)	2430 (95.7)	2655 (104.5)
			295/75R22.5-14		905 (35.6)	915 (36.0)	990 (39.0)	1015 (40.0)	2005 (78.9)	1830 (72.0)	2455 (96.7)	2695 (106.1)
	8000lbs		Fr:245/70R19.5-14 Rr:245/70R19.5-16	19.5X6.75-142	830 (32.7)	835 (32.9)	900 (35.4)	930 (36.6)	2025 (79.7)	1840 (72.4)	2360 (92.9)	2615 (103.0)
			245/70R19.5-16		830 (32.7)	835 (32.9)	900 (35.4)	930 (36.6)	2025 (79.7)	1840 (72.4)	2360 (92.9)	2615 (103.0)
			10R22.5-14	22.5X8.25-168	920 (36.2)	930 (36.6)	995 (39.2)	1020 (40.2)	1985 (78.1)	1830 (72.0)	2425 (95.5)	2705 (106.5)
			11R22.5-14		935 (36.8)	945 (37.2)	1010 (39.8)	1035 (40.7)	1985 (78.1)	1830 (72.0)	2445 (96.3)	2720 (107.1)
			11R22.5-14		920 (36.2)	935 (36.8)	1030 (40.6)	1060 (41.7)	2005 (78.9)	1870 (73.6)	2485 (97.8)	2720 (107.1)
NFC1	12000lbs		11R22.5-14	22.5X8.25-168	920 (36.2)	935 (36.8)	1030 (40.6)	1060 (41.7)	2005 (78.9)	1870 (73.6)	2485 (97.8)	2720 (107.1)
			295/75R22.5-14		900 (35.4)	915 (36.0)	1010 (39.8)	1040 (40.9)	2005 (78.9)	1870 (73.6)	2495 (98.2)	2700 (106.3)

• CHASSIS MODEL : NEC1 AND NFC1 < Day Cab >

OPTION BUMPER



Unit : mm (in.)

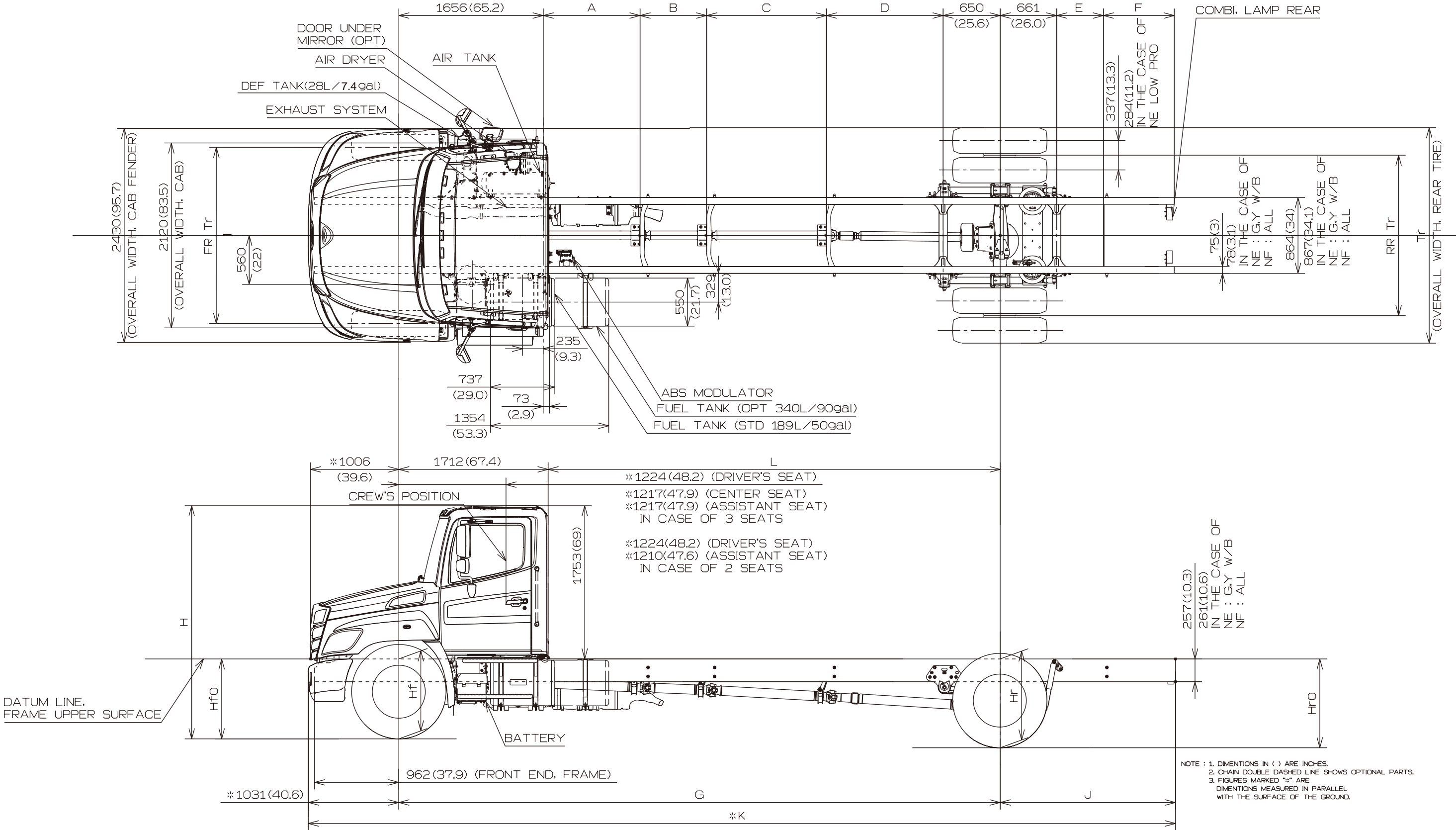
Wheel base		K*
J	4,445(175)	7,582(298.5)
L	4,750(187)	7,887(310.5)
M	5,207(205)	8,344(328.5)
P	5,512 (217)	8,649 (340.5)
R	5,969(235)	9,106(358.5)
T	6,426 (253)	9,563 (376.5)
V	6,883 (271)	10,020 (394.5)
W	7112(280)	10,249(403.5)

\* In the case of 2464mm (97") ROHF, add 457mm (18") to K.

NOTE:1.FIGURES MARKED "※" ARE DIMENSIONS MEASURED  
IN PARALLEL WITH THE SURFACE OF THE GROUND.  
2.DIMENSIONS IN ( ) ARE INCHES.

CHASSIS MODEL : NEC1 AND NFC1 < Day Cab >  
REAR AIR SUSPENSION

Unit : mm (in.)



• CHASSIS MODEL : NEC1 AND NFC1 < Day Cab >  
REAR AIR SUSPENSION

DIMENSION OF CHASSIS

Unit : mm (in.)

W/B	A	B	C	D	E	F	G	J *	K *	L
J	804 (31.7)			1335 (52.6)	523 (20.6)	823 (32.4)	4445 (175.0)	2007 (79.0)	7483 (294.6)	2733 (107.6)
L	1109 (43.7)			1335 (52.6)	523 (20.6)	823 (32.4)	4750 (187.0)	2007 (79.0)	7788 (306.6)	3038 (119.6)
M	804 (31.7)	762 (30.0)		1335 (52.6)	523 (20.6)	823 (32.4)	5207 (205.0)	2007 (79.0)	8245 (324.6)	3495 (137.6)
P	804 (31.7)	1067 (42.0)		1335 (52.6)	523 (20.6)	823 (32.4)	5512 (217.0)	2007 (79.0)	8550 (336.6)	3800 (149.6)
R	1109 (43.7)	1219 (48.0)		1335 (52.6)	523 (20.6)	823 (32.4)	5969 (235.0)	2007 (79.0)	9007 (354.6)	4257 (167.6)
T	1109 (43.7)	1676 (66.0)		1335 (52.6)	523 (20.6)	823 (32.4)	6426 (253.0)	2007 (79.0)	9464 (372.6)	4714 (185.6)
V	1109 (43.7)	762 (30.0)	1372 (54.0)	1335 (52.6)	523 (20.6)	823 (32.4)	6883 (271.0)	2007 (79.0)	9921 (390.6)	5171 (203.6)
W	1109 (43.7)	762 (30.0)	1600 (63.0)	1335 (52.6)	523 (20.6)	823 (32.4)	7112 (280.0)	2007 (79.0)	10150 (399.6)	5400 (212.6)

\* In the case of 2464mm (97") ROHF, add 457mm (18") to J and K.

W W/B is NF only.



• CHASSIS MODEL : NEC1 AND NFC1 < Day Cab >  
REAR AIR SUSPENSION

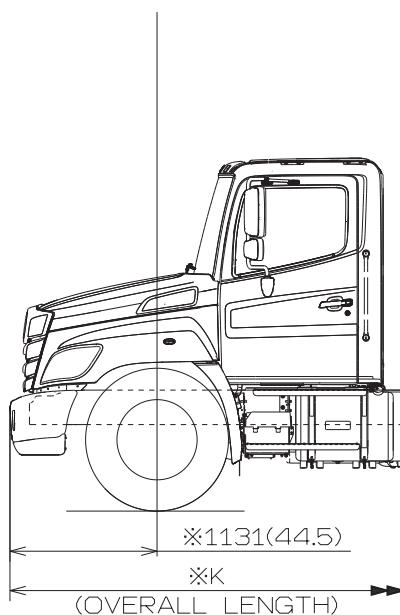
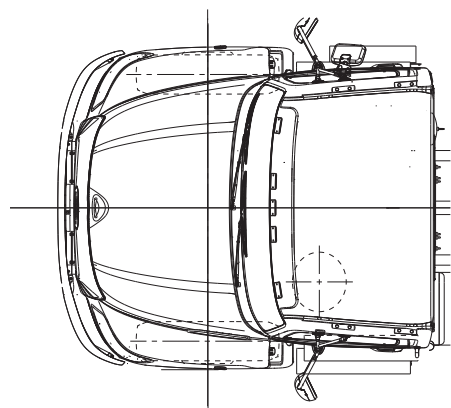
DIMENSION OF HEIGHT FROM GROUND

Unit : mm (in.)

MODEL	FR AXLE	RR AXLE	TIRE	WHEEL	GROUND HEIGHT, FRAME UPPER SURFACE				FR Tr	RR Tr	Tr	H
					Hf0	Hf	Hr	Hr0				
NEC1	10000lbs		11R22.5-14	22.5X8.25-168	925 (36.4)	935 (36.8)	990 (39.0)	1015 (40.0)	2005 (78.9)	1830 (72.0)	2445 (96.3)	2710 (106.7)
			255/70R22.5-16		865 (34.1)	875 (34.4)	930 (36.6)	955 (37.6)	2005 (78.9)	1830 (72.0)	2430 (95.7)	2650 (104.3)
			295/75R22.5-14		905 (35.6)	915 (36.0)	970 (38.2)	995 (39.2)	2005 (78.9)	1830 (72.0)	2455 (96.7)	2690 (105.9)
	8000lbs		Fr:245/70R19.5-14 Rr:245/70R19.5-16	19.5X6.75-142	830 (32.7)	835 (32.9)	885 (34.8)	900 (35.4)	2025 (79.7)	1840 (72.4)	2360 (92.9)	2610 (102.8)
			245/70R19.5-16		830 (32.7)	835 (32.9)	885 (34.8)	900 (35.4)	2025 (79.7)	1840 (72.4)	2360 (92.9)	2610 (102.8)
			10R22.5-14	22.5X8.25-168	920 (36.2)	930 (36.6)	975 (38.4)	990 (39.0)	1985 (78.1)	1830 (72.0)	2425 (95.5)	2700 (106.3)
			11R22.5-14		935 (36.8)	945 (37.2)	990 (39.0)	1005 (39.6)	1985 (78.1)	1830 (72.0)	2445 (96.3)	2715 (106.9)
NFC1	12000lbs		11R22.5-14	22.5X8.25-168	930 (36.6)	940 (37.0)	995 (39.2)	1010 (39.8)	2005 (78.9)	1870 (73.6)	2485 (97.8)	2710 (106.7)
			295/75R22.5-14		910 (35.8)	920 (36.2)	975 (38.4)	990 (39.0)	2005 (78.9)	1870 (73.6)	2495 (98.2)	2690 (105.9)

• CHASSIS MODEL : NEC1 AND NFC1 < Day Cab >  
REAR AIR SUSPENSION

OPTION BUMPER



Unit : mm (in.)

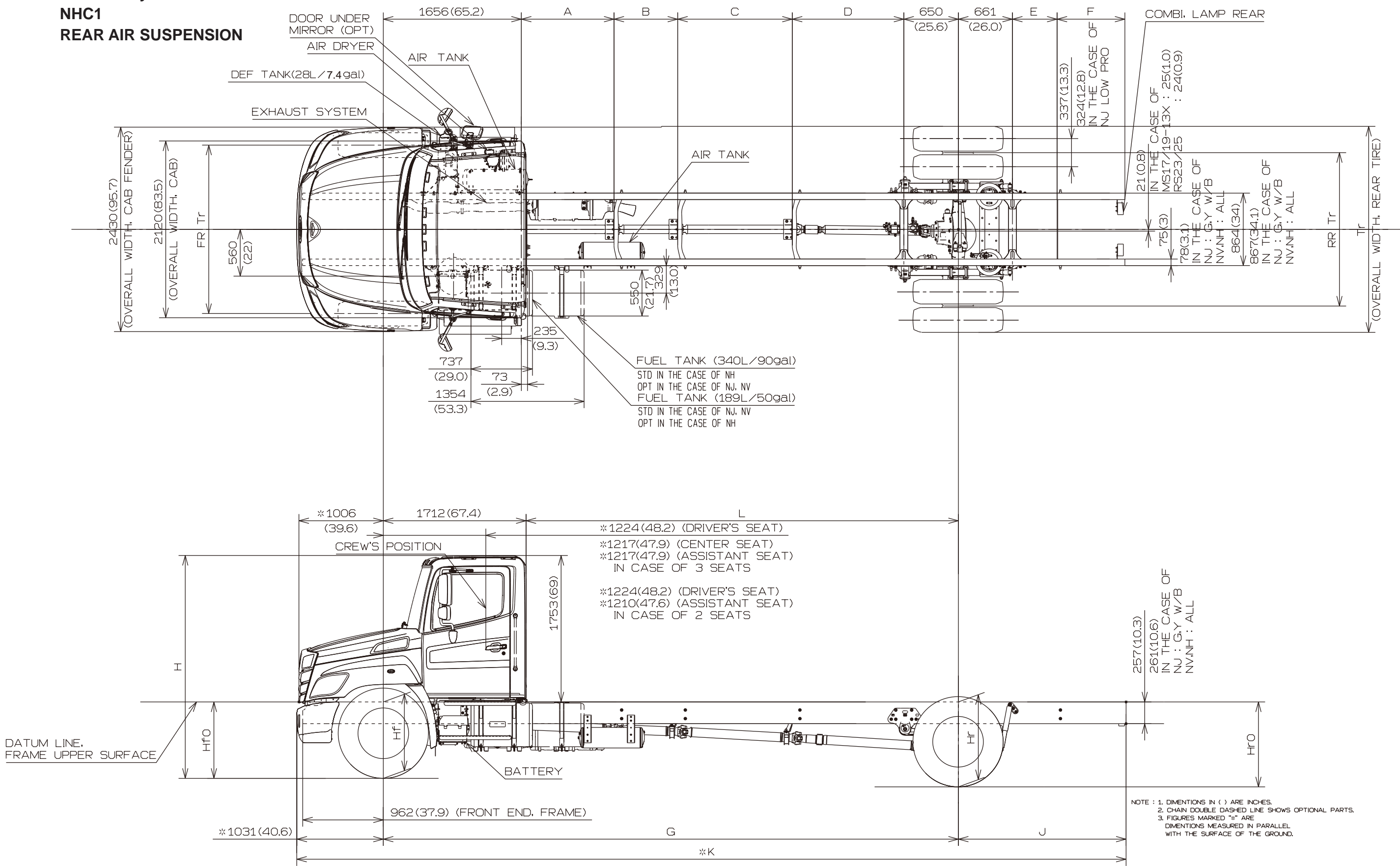
Wheel base		K*
J	4,445(175)	7,582(298.5)
L	4,750(187)	7,887(310.5)
M	5,207(205)	8,344(328.5)
P	5,512 (217)	8,649 (340.5)
R	5,969(235)	9,106(358.5)
T	6,426 (253)	9,563 (376.5)
V	6,883 (271)	10,020 (394.5)
W	7112(280)	10,249(403.5)

\* In the case of 2464mm (97") ROHF, add 457mm (18") to K.

NOTE:1.FIGURES MARKED "※" ARE DIMENSIONS MEASURED  
IN PARALLEL WITH THE SURFACE OF THE GROUND.  
2.DIMENSIONS IN ( ) ARE INCHES.

CHASSIS MODEL : NJC1 < Day Cab >  
NVC1 < Day Cab >  
NHC1  
REAR AIR SUSPENSION

Unit : mm (in.)



• CHASSIS MODEL : NJC1 < Day Cab >  
 NVC1 < Day Cab >  
 NHC1  
 REAR AIR SUSPENSION

DIMENSION OF CHASSIS

Unit : mm (in.)

W/B	A	B	C	D	E	F	G	J *	K *	L
J	804 (31.7)			1335 (52.6)	523 (20.6)	823 (32.4)	4445 (175.0)	2007 (79.0)	7483 (294.6)	2733 (107.6)
L	1109 (43.7)			1335 (52.6)	523 (20.6)	823 (32.4)	4750 (187.0)	2007 (79.0)	7788 (306.6)	3038 (119.6)
M	804 (31.7)	762 (30.0)		1335 (52.6)	523 (20.6)	823 (32.4)	5207 (205.0)	2007 (79.0)	8245 (324.6)	3495 (137.6)
P	804 (31.7)	1067 (42.0)		1335 (52.6)	523 (20.6)	823 (32.4)	5512 (217.0)	2007 (79.0)	8550 (336.6)	3800 (149.6)
R	1109 (43.7)	1219 (48.0)		1335 (52.6)	523 (20.6)	823 (32.4)	5969 (235.0)	2007 (79.0)	9007 (354.6)	4257 (167.6)
T	1109 (43.7)	1676 (66.0)		1335 (52.6)	523 (20.6)	823 (32.4)	6426 (253.0)	2007 (79.0)	9464 (372.6)	4714 (185.6)
V	1109 (43.7)	762 (30.0)	1372 (54.0)	1335 (52.6)	523 (20.6)	823 (32.4)	6883 (271.0)	2007 (79.0)	9921 (390.6)	5171 (203.6)

\* In the case of 2464mm (97") ROHF, add 457mm (18") to J and K.

• CHASSIS MODEL : NJC1 < Day Cab >  
 NVC1 < Day Cab >  
 NHC1  
 REAR AIR SUSPENSION

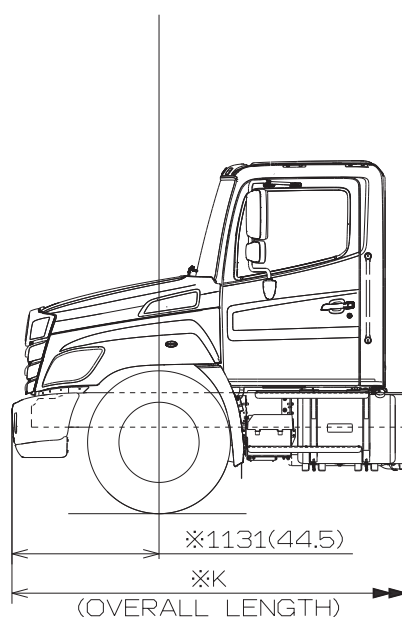
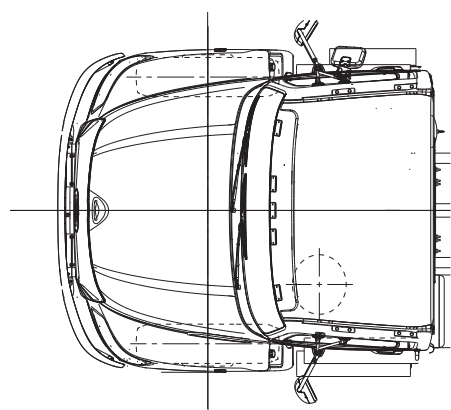
DIMENSION OF HEIGHT FROM GROUND

Unit : mm (in.)

MODEL	FR AXLE	RR AXLE	TIRE	WHEEL	GROUND HEIGHT, FRAME UPPER SURFACE				FR Tr	RR Tr	Tr	H
					Hf0	Hf	Hr	Hr0				
NJC1	8000lbs		Fr:245/70R19.5-14 Rr:245/70R19.5-16	19.5X7.50-162	835 (32.9)	840 (33.1)	885 (34.8)	900 (35.4)	2030 (79.9)	1840 (72.4)	2410 (94.9)	2610 (102.8)
			245/70R19.5-16		835 (32.9)	840 (33.1)	885 (34.8)	900 (35.4)	2030 (79.9)	1840 (72.4)	2410 (94.9)	2610 (102.8)
			11R22.5-14	22.5X8.25-168	940 (37.0)	950 (37.4)	990 (39.0)	1005 (39.6)	2020 (79.5)	1835 (72.2)	2450 (96.5)	2720 (107.1)
			255/70R22.5-16		880 (34.6)	890 (35.0)	930 (36.6)	945 (37.2)	2020 (79.5)	1835 (72.2)	2435 (95.9)	2660 (104.7)
			295/75R22.5-14		920 (36.2)	930 (36.6)	970 (38.2)	985 (38.8)	2020 (79.5)	1835 (72.2)	2460 (96.9)	2700 (106.3)
	10000lbs		11R22.5-14	22.5X8.25-168	925 (36.4)	935 (36.8)	990 (39.0)	1015 (40.0)	2020 (79.5)	1835 (72.2)	2450 (96.5)	2710 (106.7)
			255/70R22.5-16		865 (34.1)	875 (34.4)	930 (36.6)	955 (37.6)	2020 (79.5)	1835 (72.2)	2435 (95.9)	2650 (104.3)
			295/75R22.5-14		905 (35.6)	915 (36.0)	970 (38.2)	995 (39.2)	2020 (79.5)	1835 (72.2)	2460 (96.9)	2690 (105.9)
NVC1	10000lbs or 12000lbs		11R22.5-14	22.5X8.25-168	925 (36.4)	935 (36.8)	995 (39.2)	1010 (39.8)	2020 (79.5)	1835 (72.2)	2450 (96.5)	2710 (106.7)
			295/75R22.5-14		905 (35.6)	915 (36.0)	975 (38.4)	990 (39.0)	2020 (79.5)	1835 (72.2)	2460 (96.9)	2690 (105.9)
	14000lbs		11R22.5-16		940 (37.0)	945 (37.2)	995 (39.2)	1005 (39.6)	2020 (79.5)	1835 (72.2)	2450 (96.5)	2715 (106.9)
NHC1	12000lbs		11R22.5-14	22.5X8.25-168	925 (36.4)	935 (36.8)	995 (39.2)	1010 (39.8)	2020 (79.5)	1835 (72.2)	2450 (96.5)	2710 (106.7)
	14000lbs		11R22.5-16		940 (37.0)	945 (37.2)	995 (39.2)	1005 (39.6)	2020 (79.5)	1835 (72.2)	2450 (96.5)	2715 (106.9)
			Fr : 295/75R22.5-7160 Rr : 295/75R22.5-14		920 (36.2)	925 (36.4)	975 (38.4)	985 (38.8)	2020 (79.5)	1835 (72.2)	2460 (96.9)	2695 (106.1)

- CHASSIS MODEL : NJC1 < Day Cab >
- NVC1 < Day Cab >
- NHC1
- REAR AIR SUSPENSION

OPTION BUMPER



Unit : mm (in.)

	Wheel base	K*
J	4,445(175)	7,582(298.5)
L	4,750(187)	7,887(310.5)
M	5,207(205)	8,344(328.5)
P	5,512 (217)	8,649 (340.5)
R	5,969(235)	9,106(358.5)
T	6,426 (253)	9,563 (376.5)
V	6,883 (271)	10,020 (394.5)

\* In the case of 2464mm (97") ROHF, add 457mm (18") to K.

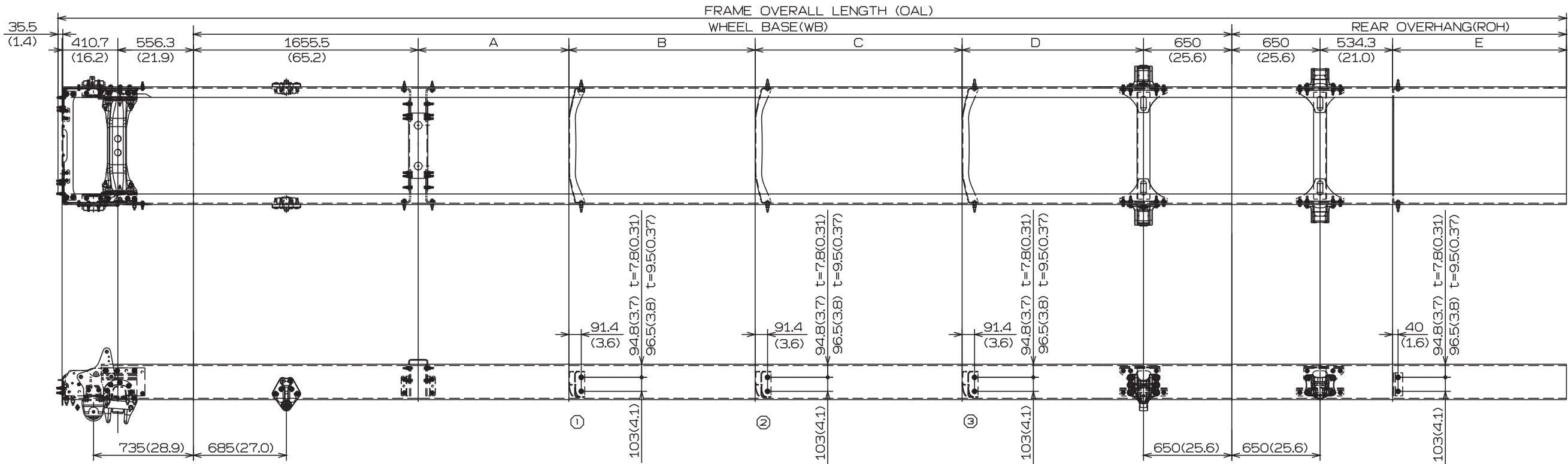
NOTE:1.FIGURES MARKED "※" ARE DIMENSIONS MEASURED  
IN PARALLEL WITH THE SURFACE OF THE GROUND.  
2.DIMENSIONS IN ( ) ARE INCHES.

4. CHASSIS FRAME DRAWINGS

Unit : mm (in.)

CHASSIS MODEL : All models with day cab leaf suspension

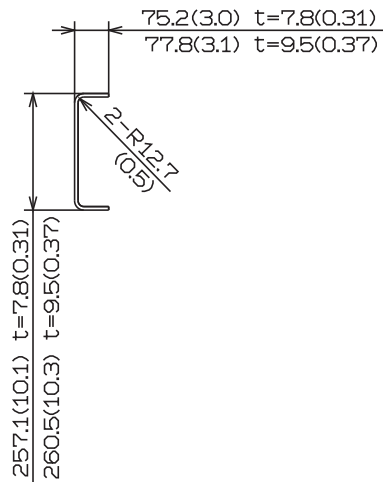
1) DETAIL OF CHASSIS FRAME



DIMENSION OF CHASSIS

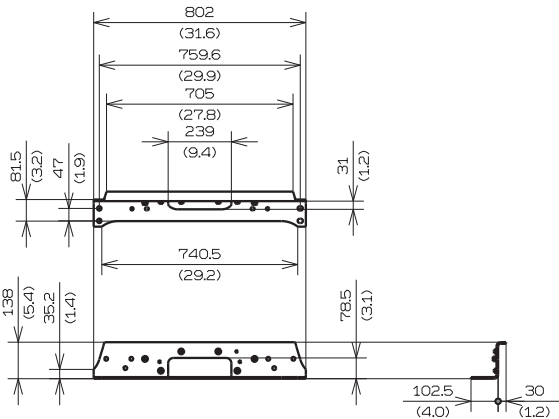
	WB	A	B	C	D	E	ROH	OAL
J	4445.0 (175)	804.1 (31.7)	1335.4 (52.6)			822.7 (32.4) 1279.7 (50.4)	2007 (79) 2464 (97)	7449.0 (293.3) 7906.0 (311.3)
L	4749.8 (187)	1108.9 (43.7)	1335.4 (52.6)			822.7 (32.4) 1279.7 (50.4)	2007 (79) 2464 (97)	7753.8 (305.3) 8210.8 (323.3)
M	5207.0 (205)	804.1 (31.7)	762 (30)	1335.4 (52.6)		822.7 (32.4) 1279.7 (50.4)	2007 (79) 2464 (97)	8211.0 (323.3) 8668.0 (341.3)
P	5511.8 (217)	804.1 (31.7)	1066.8 (42)	1335.4 (52.6)		822.7 (32.4) 1279.7 (50.4)	2007 (79) 2464 (97)	8515.8 (335.3) 8972.8 (353.3)
R	5969.0 (235)	1108.9 (43.7)	1219.2 (48)	1335.4 (52.6)		822.7 (32.4) 1279.7 (50.4)	2007 (79) 2464 (97)	8973.0 (353.3) 9430.0 (371.3)
T	6426.2 (253)	1108.9 (43.7)	1676.4 (66)	1335.4 (52.6)		822.7 (32.4) 1279.7 (50.4)	2007 (79) 2464 (97)	9430.2 (371.3) 9887.2 (389.3)
V	6883.4 (271)	1108.9 (43.7)	762 (30)	1371.6 (54)	1335.4 (52.6)	822.7 (32.4) 1279.7 (50.4)	2007 (79) 2464 (97)	9887.4 (389.3) 10344.4 (407.3)
W	7112.0 (280)	1108.9 (43.7)	762 (30)	1600.2 (63)	1335.4 (52.6)	822.7 (32.4) 1279.7 (50.4)	2007 (79) 2464 (97)	10116.0 (398.3) 10573.0 (416.3)

DETAIL OF FRAME END

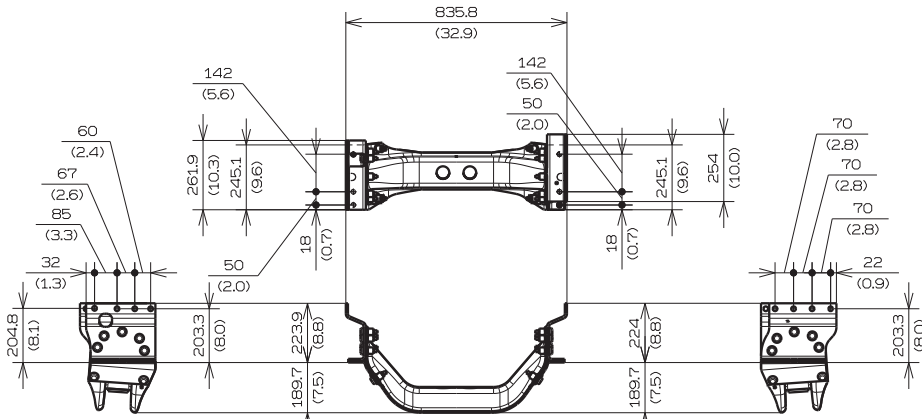


2) DETAIL OF CROSSMEMBER

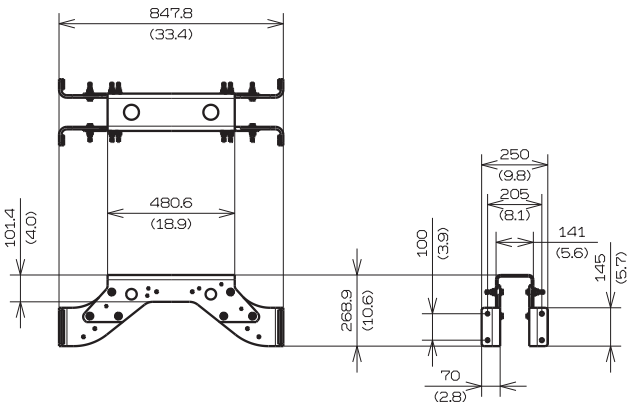
Unit : mm (in.)



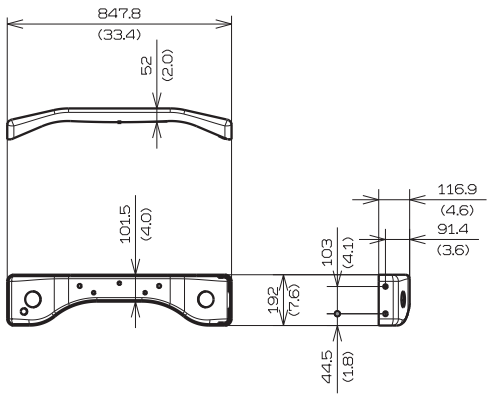
NO.1 CROSSMEMBER



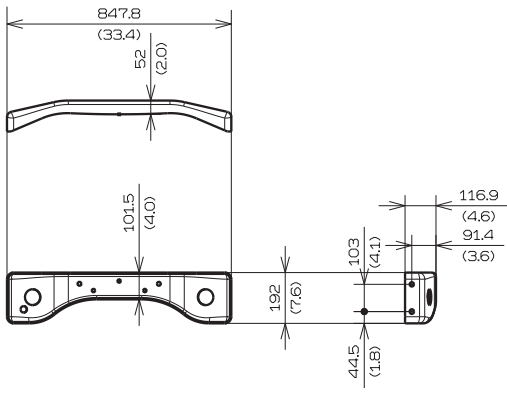
NO.2 CROSSMEMBER



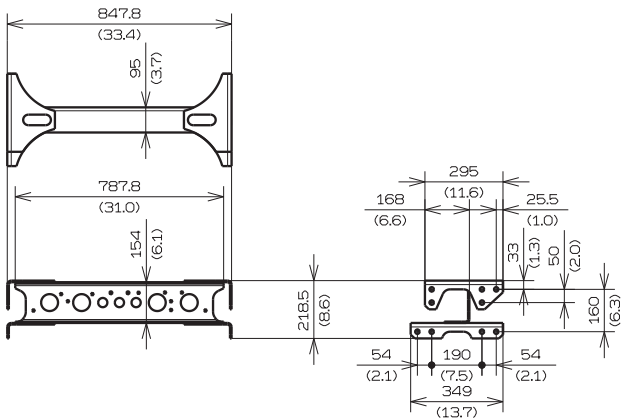
NO.3 CROSSMEMBER



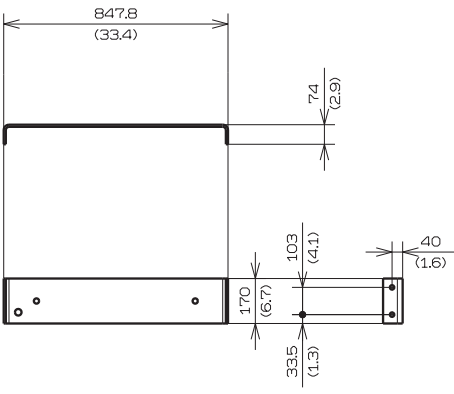
① DOGBORNE STYLE CROSSMEMBER (REINFORCED)



②, ③ DOGBORNE STYLE CROSSMEMBER (NON-REINFORCED)



WELDED STYLE CROSSMEMBER



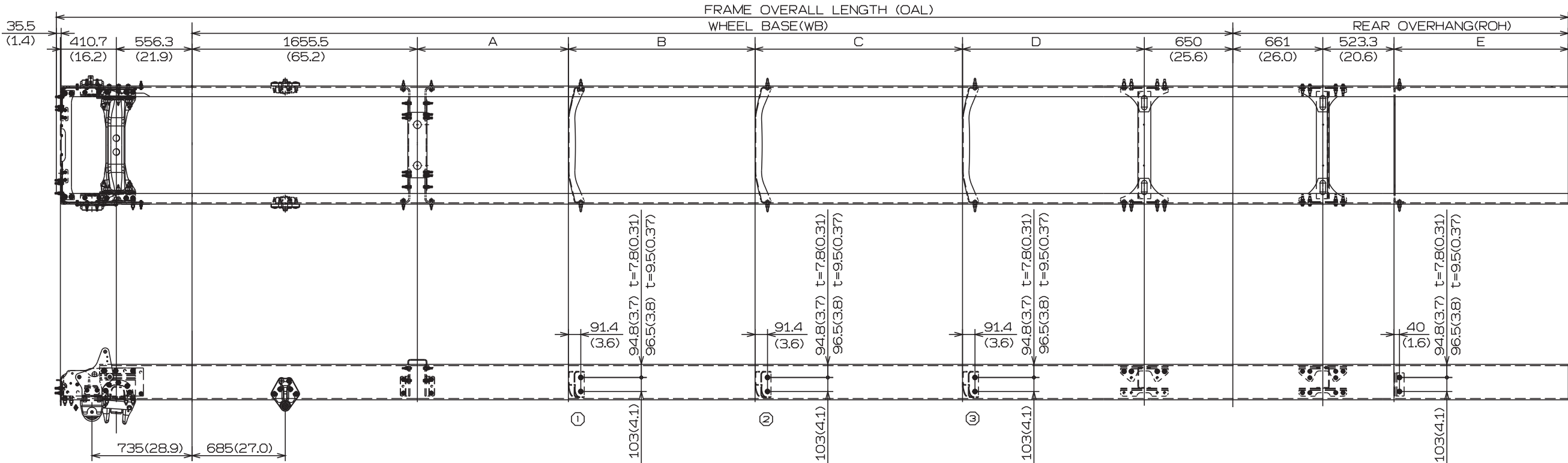
END CROSSMEMBER



CHASSIS MODEL : All models with day cab air suspension

1) DETAIL OF CHASSIS FRAME

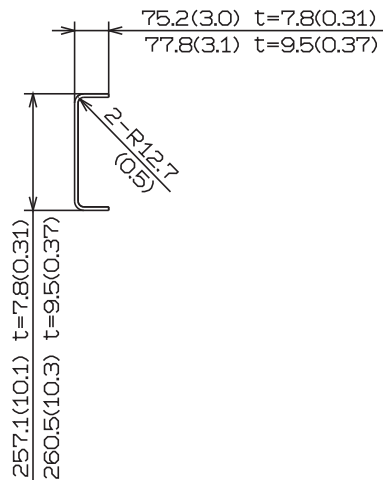
Unit : mm (in.)



DIMENSION OF CHASSIS

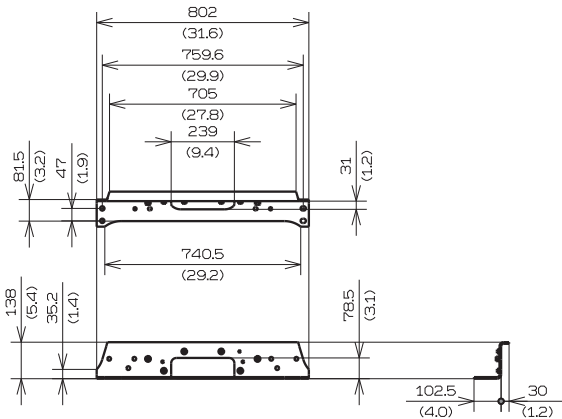
	WB	A	B	C	D	E	ROH	OAL
J	4445.0 (175)	804.1 (31.7)	1335.4 (52.6)			822.7 (32.4) 1279.7 (50.4)	2007 (79) 2464 (97)	7449.0 (293.3) 7906.0 (311.3)
L	4749.8 (187)	1108.9 (43.7)	1335.4 (52.6)			822.7 (32.4) 1279.7 (50.4)	2007 (79) 2464 (97)	7753.8 (305.3) 8210.8 (323.3)
M	5207.0 (205)	804.1 (31.7)	762 (30)	1335.4 (52.6)		822.7 (32.4) 1279.7 (50.4)	2007 (79) 2464 (97)	8211.0 (323.3) 8668.0 (341.3)
P	5511.8 (217)	804.1 (31.7)	1066.8 (42)	1335.4 (52.6)		822.7 (32.4) 1279.7 (50.4)	2007 (79) 2464 (97)	8515.8 (335.3) 8972.8 (353.3)
R	5969.0 (235)	1108.9 (43.7)	1219.2 (48)	1335.4 (52.6)		822.7 (32.4) 1279.7 (50.4)	2007 (79) 2464 (97)	8973.0 (353.3) 9430.0 (371.3)
T	6426.2 (253)	1108.9 (43.7)	1676.4 (66)	1335.4 (52.6)		822.7 (32.4) 1279.7 (50.4)	2007 (79) 2464 (97)	9430.2 (371.3) 9887.2 (389.3)
V	6883.4 (271)	1108.9 (43.7)	762 (30)	1371.6 (54)	1335.4 (52.6)	822.7 (32.4) 1279.7 (50.4)	2007 (79) 2464 (97)	9887.4 (389.3) 10344.4 (407.3)
W	7112.0 (280)	1108.9 (43.7)	762 (30)	1600.2 (63)	1335.4 (52.6)	822.7 (32.4) 1279.7 (50.4)	2007 (79) 2464 (97)	10116.0 (398.3) 10573.0 (416.3)

DETAIL OF FRAME END

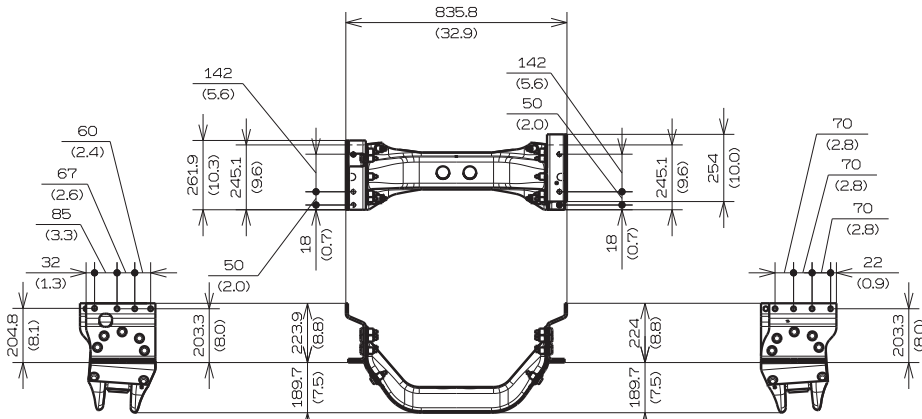


2) DETAIL OF CROSSMEMBER

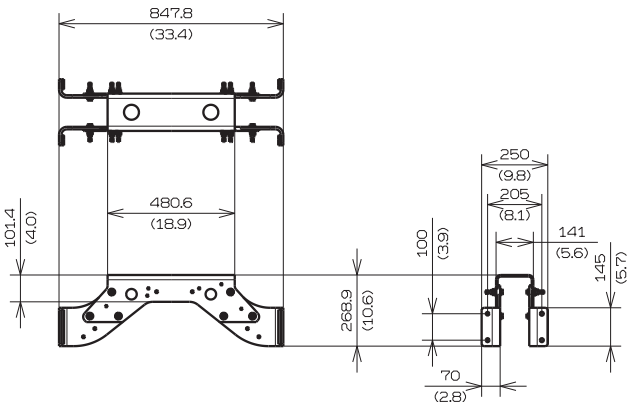
Unit : mm (in.)



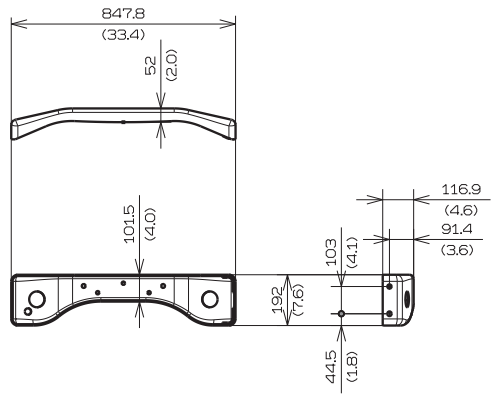
NO.1 CROSSMEMBER



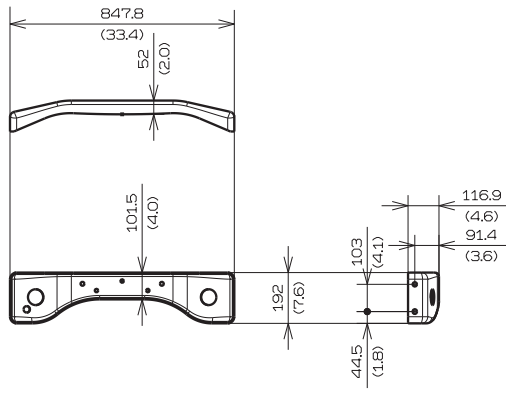
NO.2 CROSSMEMBER



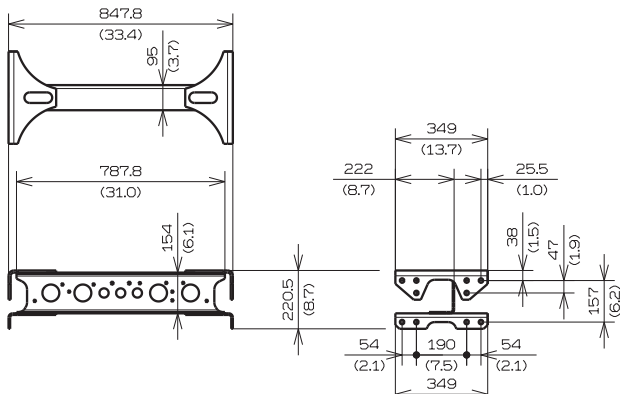
NO.3 CROSSMEMBER



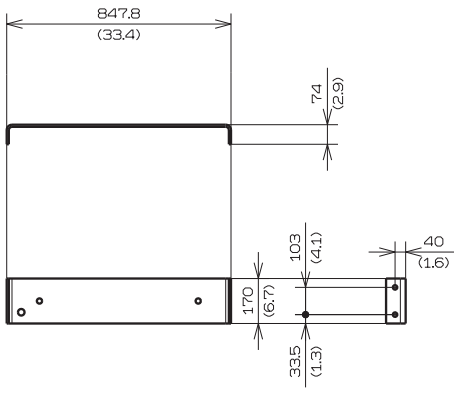
① DOGBORNE STYLE CROSSMEMBER (REINFORCED)



②, ③ DOGBORNE STYLE CROSSMEMBER (NON-REINFORCED)



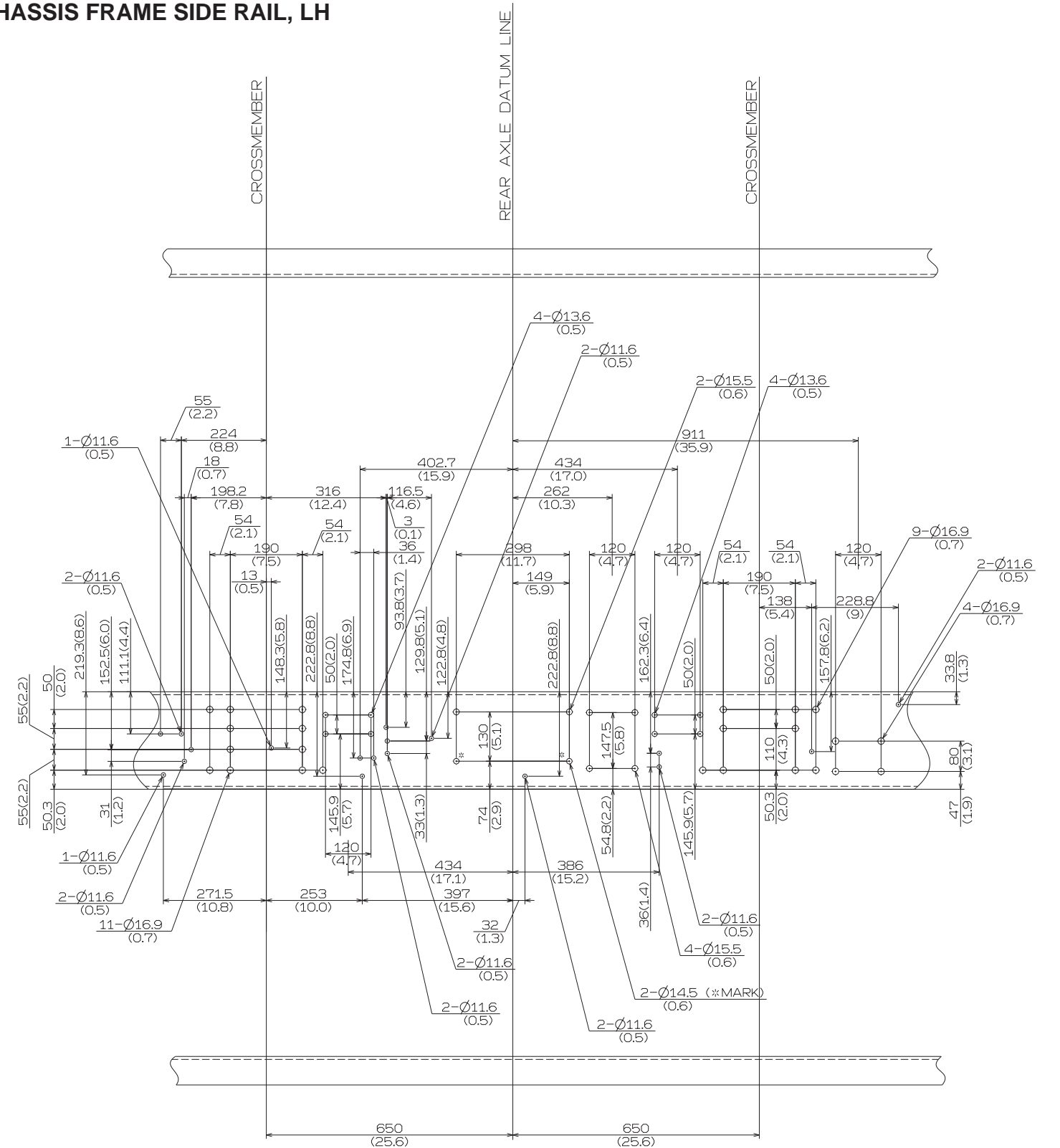
WELDED STYLE CROSSMEMBER



END CROSSMEMBER

**CHASSIS MODEL : NEC1 FOR LEAF SUS. WITH HYDRAULIC BRAKE SERIES  
{FRAME THICKNESS 7.8 mm (0.31 in.)}**

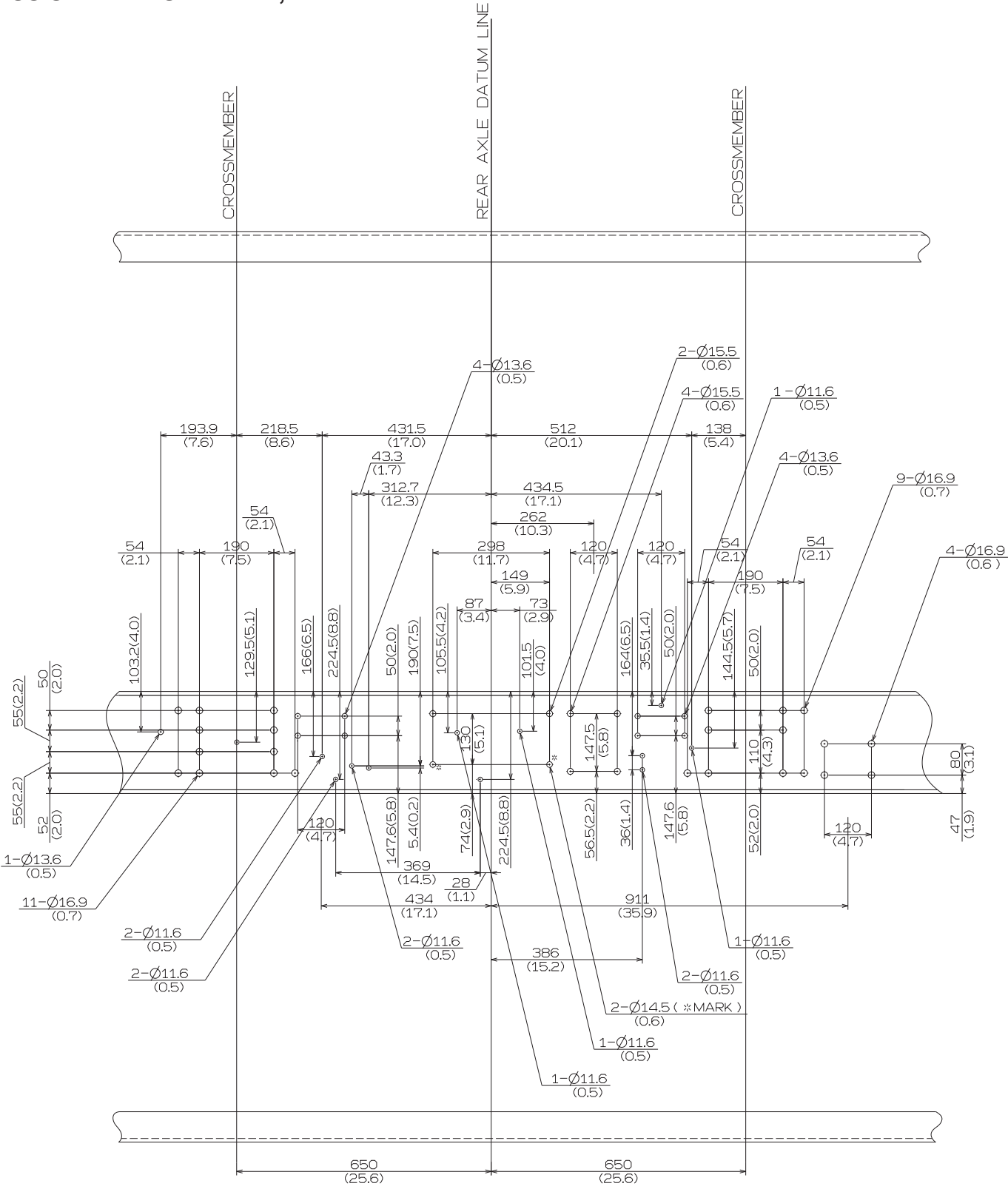
- CHASSIS FRAME SIDE RAIL, RH



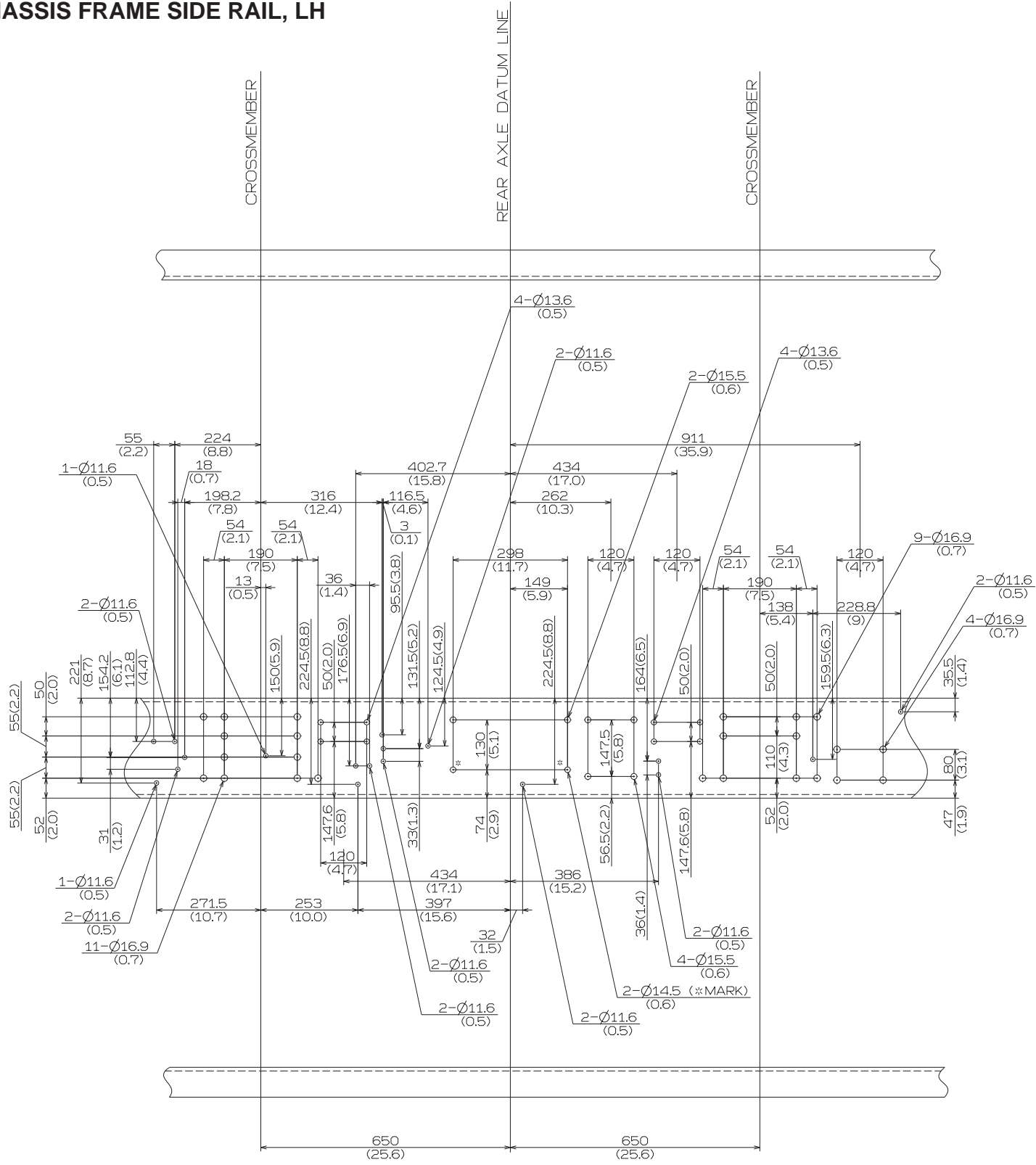
CHASSIS MODEL : NFC1 FOR LEAF SUS. WITH HYDRAULIC BRAKE SERIES  
{FRAME THICKNESS 9.5 mm (0.37 in.)}

Unit : mm (in.)

• CHASSIS FRAME SIDE RAIL, RH

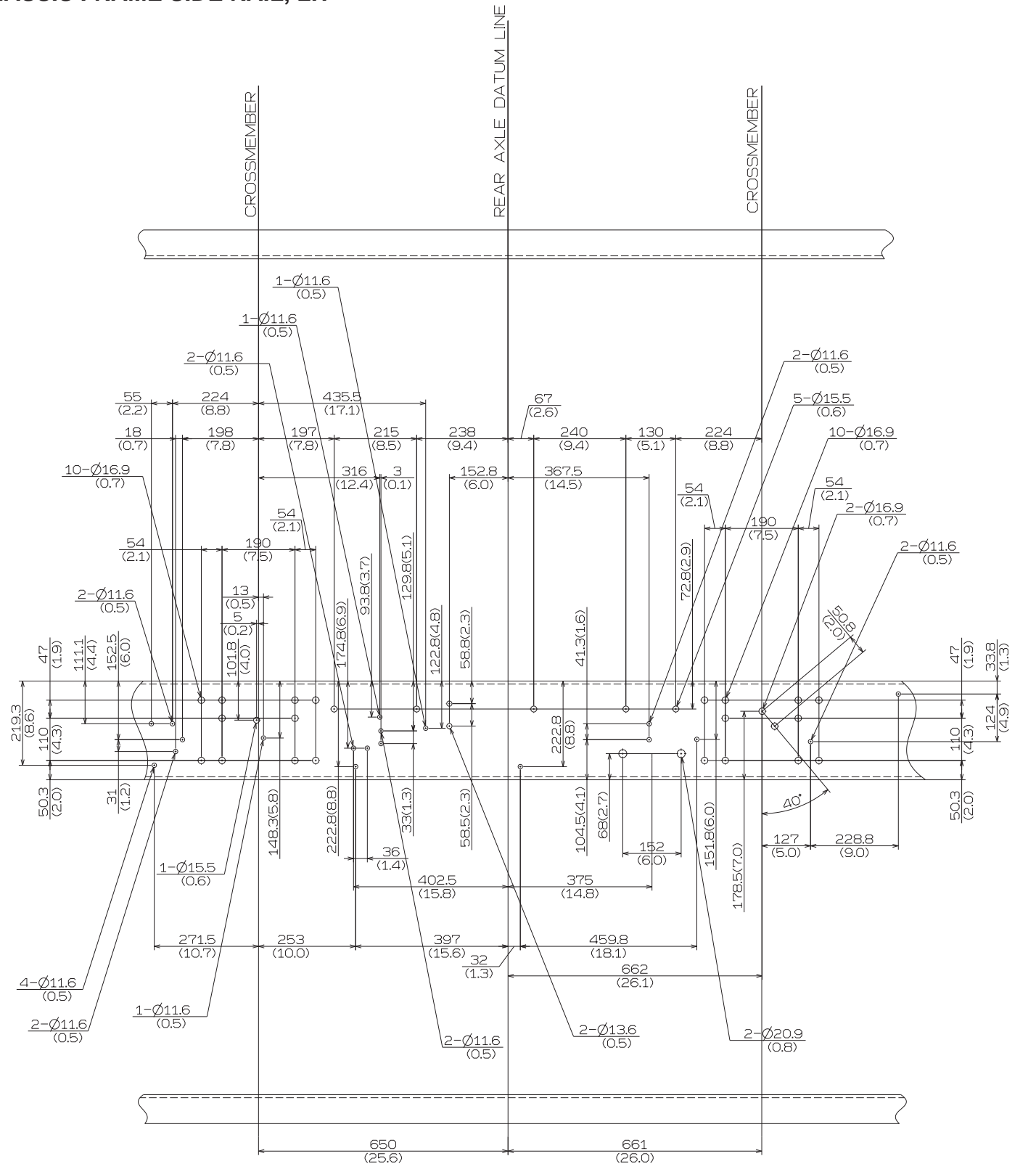


• CHASSIS FRAME SIDE RAIL, LH



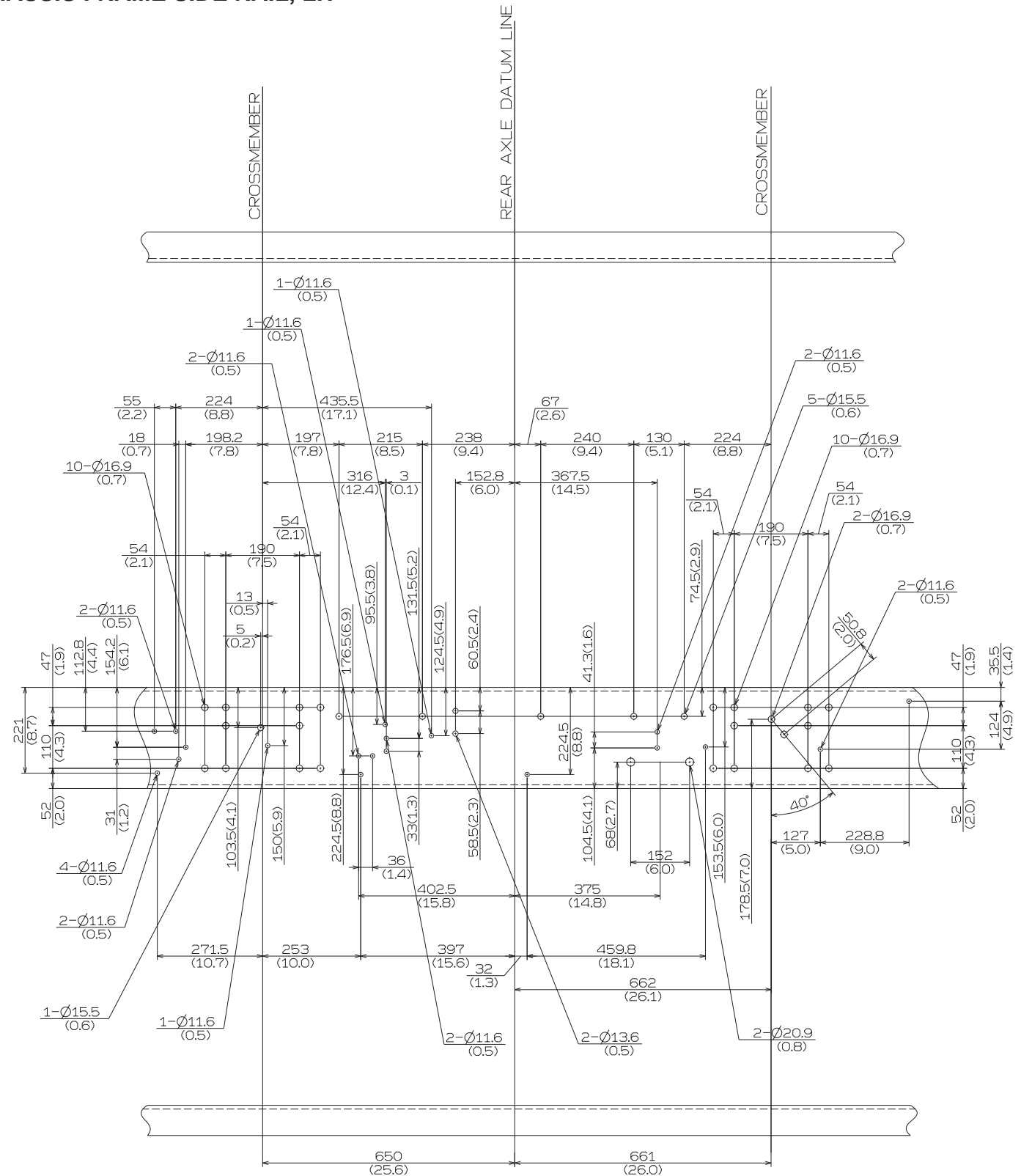
## Unit : mm (in.)

- CHASSIS FRAME SIDE RAIL, LH



## Unit : mm (in.)

- CHASSIS FRAME SIDE RAIL, LH

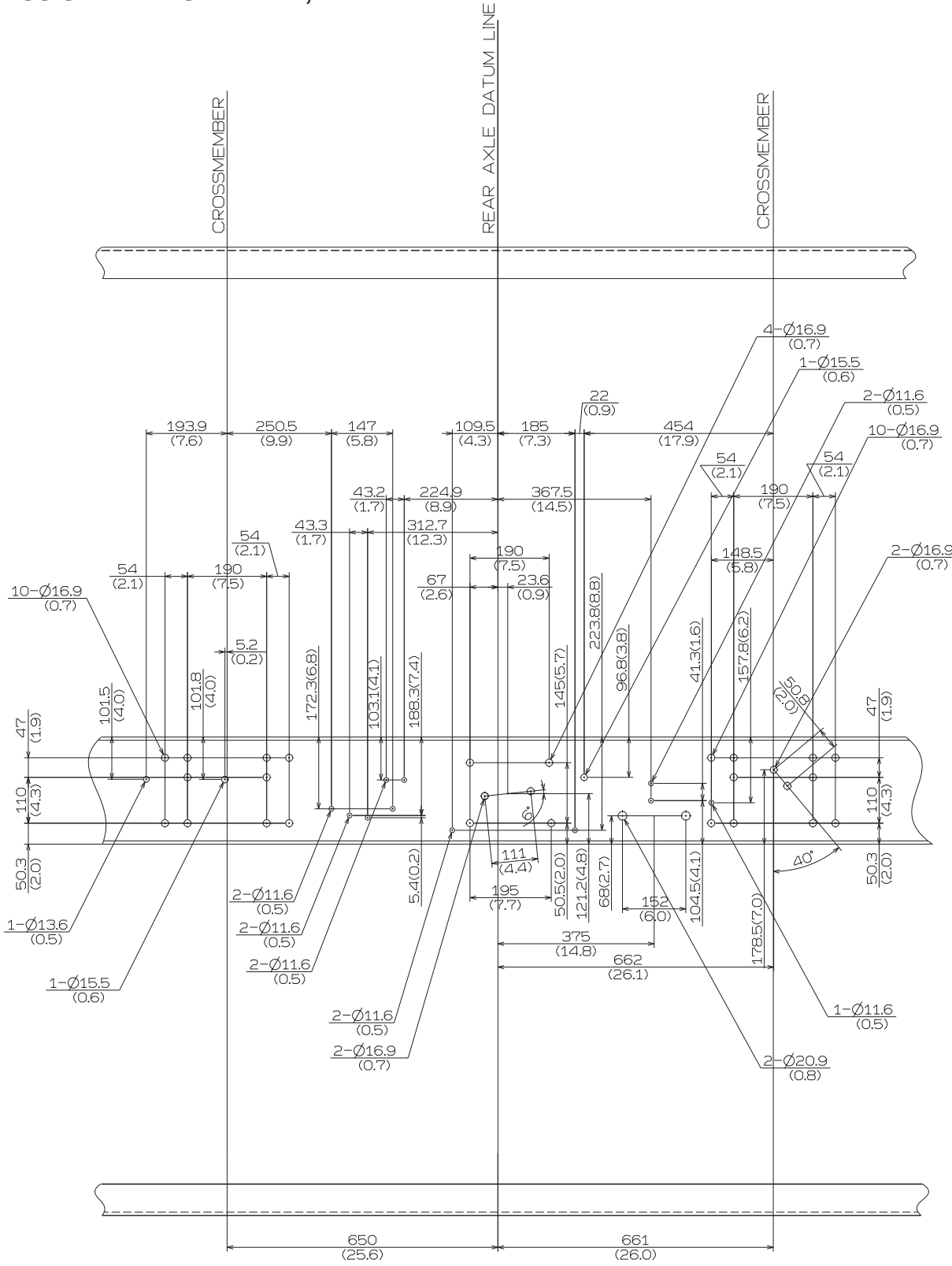




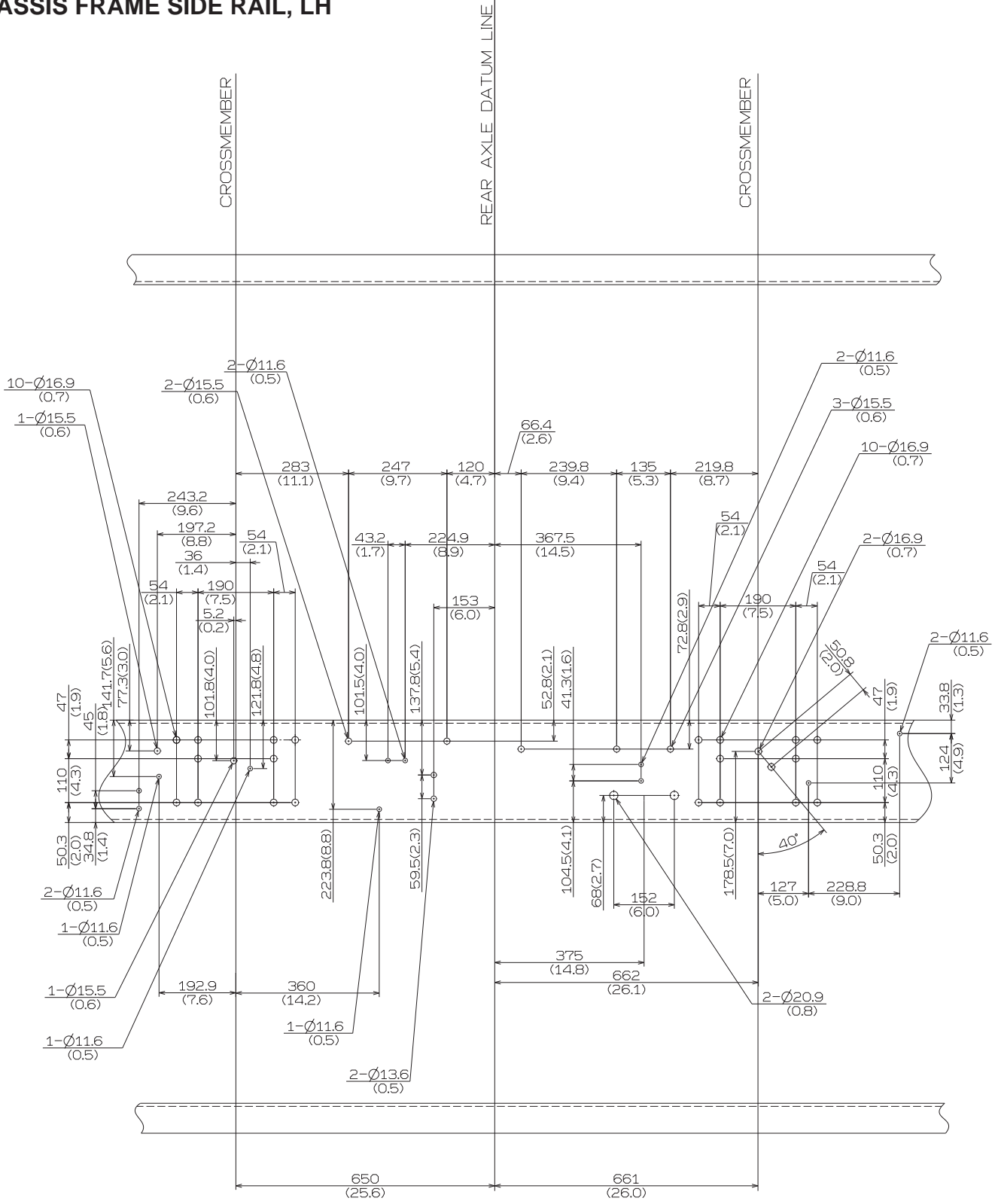
CHASSIS MODEL : NJC1 FOR AIR SUS. WITH FULL AIR BRAKE SERIES  
{FRAME THICKNESS 7.8 mm (0.31 in.)}

Unit : mm (in.)

• CHASSIS FRAME SIDE RAIL, RH



• CHASSIS FRAME SIDE RAIL, LH



## Unit : mm (in.)

- CHASSIS FRAME SIDE RAIL, LH

